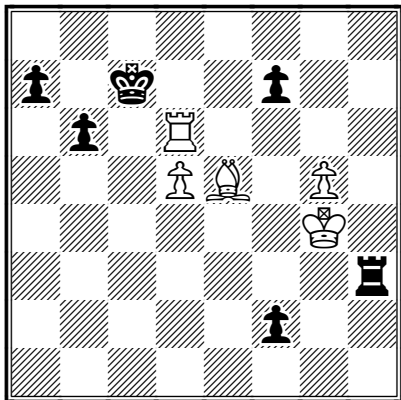


Find the Best Move!

Koblencs–Moiseev, Riga 1955



Black to play

It looks like **Black is in trouble** – the threat **2.♖f6+** is very serious. What can he do?

Chess Today News



Chess Today and ICC
 GM Alex Baburin reports



In May our readership grew fast, thanks to the recent announcement about CT on ICC. The [Internet Chess Club](http://www.chessclub.com) is certainly the most popular place to play chess online for serious chess addicts. I go there often myself – sometimes for an odd game or chat, sometime to give an online lesson. If you are an ICC member, you can top up your CT account with a 20% discount – while on ICC, type **c-offer IrishBear Amount Your Name Your e-mail address**. Instead of "amount" type 14 for 4 month subscription, 19 – for 6 months and 32 for an annual subscription. Also, do not forget to mention that you are an existing subscriber!

For more information on chekels read www.chessclub.com/help/chekels.

Don't wait too long – this offer is good only until May 23.

♦ *CT April Lottery*

For those readers, who are not familiar with CT lotteries, I'd like to mention that all paid members enter a draw every month, with a chance to win a quality book – sometimes with CT you get even more than your hoped for! In April the prize was *Fundamental Chess Endings* by GM Karsten Mueller and IM Frank Lamprecht and the lucky winner was Ee Heng Chin from Singapore. In May we will have *New In Chess Yearbook No. 62* as the prize in our draw.

♦ *New faces in Chess Today*

As you have probably noticed, the CT team keeps on growing. Last week IM **Maxim Notkin** started writing for us and I hope you would agree that he made a very good start! GM **Peter Kiriakov** is going to join us soon – he will have a monthly column on chess openings. I also hope that IM **Yochanan Afek** will write for CT about chess composition. All in all, the paper will become even better! You can see information about our contributors on the ["Who's Who in CT"](#) page.

♦ *You can help Chess Today!*

While CT is growing, we could do with more subscribers. As we have a very loyal readership (about 90–95 % of our readers re-subscribe), I reckon that the main problem is that CT is a relatively little-known paper. I'll give you an example: in February I went to Norway and met with over 100 chess players. I bet that less than 3 had ever heard about Chess Today! I believe that there are over 80,000 registered

players in the USA and over 100,000 registered players in Germany, not to mention other (numerous) countries, where chess is popular. Net access is available for many, the language barrier is not too serious now and the price of CT subscription isn't that high. Thus I see our main goal as being to reach out to more chess players. CT is making deals with chess magazines around the world and hopefully this will come to fruition soon, introducing CT to chess fans in many countries.

Meanwhile I would like to appeal to our existing readers – please help us by spreading the good word about CT – do it online, in your clubs and at the tournaments where you play. Feel free to forward a few CT issues to your chess friends and please post printed issues in your chess clubs and at tournaments. **Currently CT is the only global chess daily, so please support it!**



♦ I would like to draw your attention to the online chess auction, which is in progress at The GM Square website – www.gmsquare.com/chessauction.

There are many interesting lots, including a book signed by the great Paul Keres. The first half of the auction finishes on Sunday and the second (bigger) half is scheduled for next week. To bid, one needs to register, but everyone is welcome to have a look!

The Alekhine Defence Lives!

I would like to conclude the story about my recent trip to France and England with the following game from the 4NCL:

(Note by GKB – See CT-551 and CT-552., also CT-547 and info and pgn files at bcmchess.co.uk)

□ **J Plaskett (2462)**

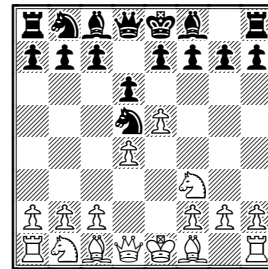
■ **A Baburin (2565)**

4NCL (11), 06.05.2002 – B05

Notes by GM Alexander Baburin

Although we often play in the same tournaments, this was my first game against Jim Plaskett. He is a very dangerous player, so I decided to stick to my trusted opening. Besides, I have not seen him face it often.

1.e4 ♘f6 2.e5 ♘d5 3.d4 d6 4.♗f3 (D)



4...♗g4

Here I often vary – I can play 4...c6, 4...g6 or 4...g6, which makes preparation harder for my opponents.

5.♗e2 e6

5...c6 with the idea 6.0-0 ♗xf3 7.♗xf3 dxe5 8.dxe5 e6 is another popular line – the Flohr Variation.

6.h3

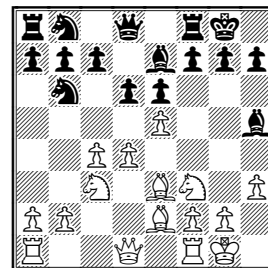
It is usually good for White to include h2-h3 here.

6...♗h5

6...♗xf3?! is dubious for after 7.♗xf3 Black has no time for ...dxe5.

7.0-0 ♗e7 8.c4 ♘b6 9.♘c3 0-0

10.♗e3 (D)



This is a very common position in the Alekhine Defence.

10...a6

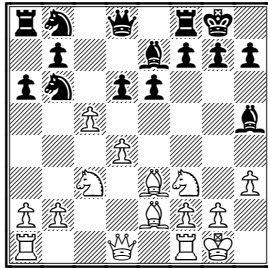
Here Black cannot just develop his last piece – 10...♘c6? leads to trouble after 11.exd6 cxd6 12.d5 exd5 13.♘xd5 ♘xd5 14.♗xd5 ♗g6. Instead, 10...d5 is the main line here, but I

wanted to surprise my opponent. The point of Black's last move is that it vacates the a7-square, so Black now wants to take on f3 and c4.

11.exd6

Black's idea works well after 11.♖c1?! ♕xf3 12.♗xf3 ♜xc4 13.♗xb7 ♖a7 and Black is fine. After 11.b3 d5 12.c5 ♜c8 13.b4 ♜c6 the move ...a7-a6 turns out to be quite useful too.

11...cxd6 12.c5! (D)



This is a very interesting move – White wants to take advantage of his better development. More common is 12.♖b3, for example: 12...♗d8 13.♖ac1 ♖c8 14.♗d2 ♗xe2 15.♗xe2 ♗g5?! 16.♗xg5 ♖xg5 17.♗e4 ♖e7 18.c5 Anand–Morozevich, Moscow 1995.

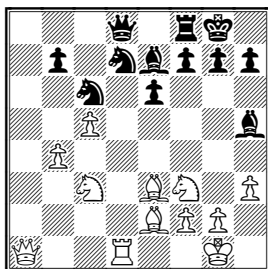
12...dxc5

12...♜c8 13.♖b3 ♖c7 14.cxd6 ♗xd6 15.♖ac1 ♜c6 16.d5 exd5 17.♗xd5 ♖b8 18.♖fd1± ♗6e7 19.♗c5 ♗xc5 20.♖xc5 ♗xf3 21.♗xf3 ♜c6 22.♗e3 ♖a7 23.♖c3 ♗8e7 24.♖d7 ♖fc8 25.♗xc6 ♖xc6 26.♖xc6 ♗xc6 27.♗f5 1–0 Mestel–Kovacevic, Plovdiv 1983.

13.dxc5 ♗6d7 14.b4 a5

I spent 18 minutes on this move, but I am not sure whether it was the best option. I did not like 14...b6 15.cxb6 ♗xb6 16.♖xd8 ♗xd8±, but 14...♜c6!?

15.a3 axb4 16.axb4 ♖xa1 17.♖xa1 ♗c6 18.♖d1! (D)



This is a very unpleasant move for Black.

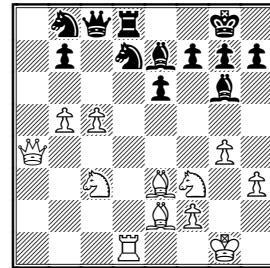
18...♖c8

Not the best square for the queen, but the choice was not great: 18...♗xb4 19.♗e5+- or 18...♗xf3 19.♗xf3 ♗xb4 20.♖a4 ♜c6 21.♗xc6 bxc6 22.♖a7+-.

19.♖a4 ♖d8

I am not sure about this move now, as it allows White to gain more space.

20.g4! ♗g6 21.b5 ♗cb8! (D)



A Paradoxical move! Of course, I heard that knights should be placed in the centre, but I was never sure why! :-) After the 'normal' move 21...♗ce5 White would exchange a few pieces – 22.♗xe5 ♗xe5 23.♖xd8+ – increasing his king's safety and the importance of his queenside pawn majority.

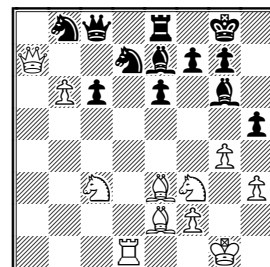
22.♖a7

This is a very double-edged move. I believe that better was 22.♖c4 and White keeps some advantage, for example after 22...♖e8 23.♗a4 h5.

22...♖e8 23.c6

After 23.♗a4 ♗c2! here we can see the difference with the line 22.Qc4!. Black is fine after 24.♗b6 ♗xb6 25.♖c1 ♗d5 26.♖xc2 ♗xe3 27.fxe3 ♖c7.

23...bxc6 24.b6 h5 (D)

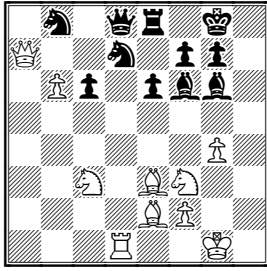


Black makes a useful move, weakening the enemy king. This is a strange position – while it looks very good for White, in a brief post-mortem we did not find anything clear for him.

25. ♖c1

25. ♗f4 hxg4 26. hxg4 ♗b4!?

25...hxg4 26.hxg4 ♖d8 27. ♖d1
♗f6! (D)



Naturally, Black is not interested in repeating moves with 27...♖c8. Here Jim had 21 minutes left, while I had 19 minutes to make 13 moves.

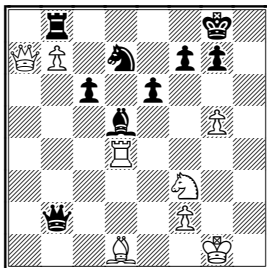
28. ♗a4 ♗c2! 29. ♖d2 ♗e4! 30. ♗c5
♗d5

The d5-bishop cements Black's position. Now it's clear that White does not have too much to show for the sacrificed pawn.

31. ♗xd7 ♗xd7 32. b7 ♖e7 33. g5
♗c3

This is where Black's 28th move comes in handy!

34. ♖d3 ♖b4 35. ♗d4 ♗xd4
36. ♖xd4 ♖b2 37. ♗d1 ♖b8 (D)



The terrifying b-pawn is lost, so White resigned. 0-1 Time: 1.59-1.56

Solution to our tactical position:

Koblencs-Moiseev, Riga 1955

1...f5+!! As 2.gxf5, 2.♖xf5 and 2.♖xh3 all allow 2...f1♖, White resigned. 0-1

Contact information. Do you want to report a tournament or have a suggestion concerning Chess Today? E-mail us at ct@gmsquare.com. We always appreciate your comments and feedback!

Please tell your chess friends about Chess Today. Feel free to send them our newspaper to sample – with more readers the price will go down, while the quality will go up!

Chess Today is published by:

Alexander Baburin, 3 Eagle Hill, Blackrock, Co. Dublin, Ireland. Tel: (353-1) 278-2276. Fax/phone: (353-1) 283-6839.

E-mail: ct@gmsquare.com

Website: <http://www.chesstoday.net/>

Editors:

GM Alexander Baburin, GM Ruslan Scherbakov and IM Vladimir Barsky.

Technical editors:

Graham Brown and Ralph P. Marconi.

Chess Today is copyright 2002 by

Alexander Baburin and protected intellectual property under the International Copyright convention. Any unauthorised reproduction, via print, electronic format, or in any form whatsoever is strictly prohibited without express written permission.