



FOUR NATIONS CHESS LEAGUE

Division 3 Round 1 report by Matt Lunn & William Jones (KJCA Kings)



For this season's reports I have taken on a worthy writing partner in William Jones. William is board 1 for *KJCA Kings*, currently possessing a FIDE rating of 2089 and an ECF of 195. He scored an impressive result at this year's British Championship in Torquay; coupled with his 2300 TPR at last year's 4ncl I feel certain he is one to watch for the future. He will annotate a selection of games (annotations of games and comments below diagrams are all his unless specified), whilst I remain commentator and resident prattler. Let's crack on!

Wessex 2 vs Bristol 2 (4.0-2.0)

It is clear from this weekend's performance that Wessex 2 haven't been too disheartened by the previous season's demotion, scoring two conclusive wins against decent opposition. I would however be lying if I said this was one of the more exciting fixtures of the weekend, with three of the games ending as drawn after less than 26 moves. *Bromilow – Taylor-Bowd* was a tepid 11 mover that ended shortly after the queens went off, whilst *Gregory – Richardt* was a quiet KIA in which black comfortably achieved equality. *May – Clark* is worth a look because the 2.Na3 Sicilian is still comparatively rare; although it is amassing a following at club level (and has been endorsed by a few strong players). The idea is to achieve a good c3 Sicilian by playing Na3-c2 at an opportune moment, something which is often difficult to achieve in the Alapin proper. Black equalised early on, but failed to prove any advantage in the ensuing ending. *Marsh – Stewart* reached a closed position early on, but there are undoubtedly some points of interest. To me Black's 16.b6 looks like a positional error, gifting away the white squares and preventing a later break with c6. 12. Bd1 looks like an interesting reply (And one that Fritz endorses) with the intention of relocating to the queenside – specifically a4. White got a fairly good position following the exchange on b5, but eventually the advantage petered out and a draw was agreed. Worth a look because it is surely indicative of how difficult it can sometimes be to win += positions! *Pleasants – Pontor* was a theoretical Reti where white won a pawn early on; this extra pawn proved instrumental and a kingside pawn roller ultimately proved decisive. The most entertaining game of the fixture was Humphreys – Tunks, which William has annotated below.

Humphreys, Jerry (2082) - Tunks, Dominic (2076) [B74] (Jones, William)
4ncl div3 Wessex2 vs Bristol2 (1)

1.e4 c5 2.Nf3 d6 3.d4 cxd4 4.Nxd4 Nf6 5.Nc3 Nc6 6.Be2 g6 7.Be3 Bg7 8.0-0 0-0 9.Nb3 a5

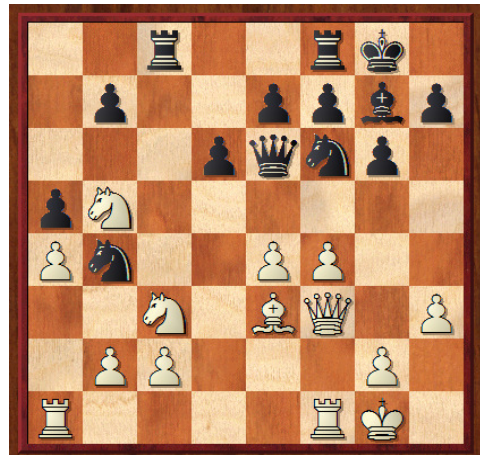
The most common move here is 10. a4, appearing 200/229 times from Big Database 2009. The following variation came up in Galkin, Alexander-Tiviakov, Sergei 1998:

10. a4 Be6 11. f4 Nd7 12. Rb1 Bxb3 13. cxb3 Nc5 14. e5 Ne6 15. exd6 exd6 16. Bc4 Ned4 17. Bf2 Qd7 18. Qd2 Rae8 1/2-1/2



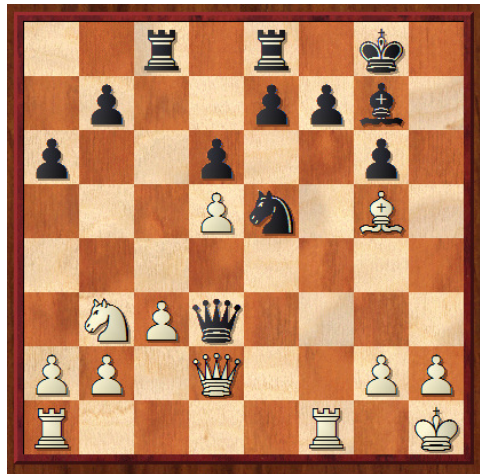
10.f4 a4 11.Nd2 a3

The reason for playing a4 has become clear. Following this Black may respond with 10...Be6. 10. a4 Be6 11. f4 Qc8 12. Nd4 Bg4 13. Ndb5 Bxe2 14. Qxe2 Qg4 15. Qf2 Rac8 16. h3 Qe6 17. Qf3 Nb4, Van Geet-Korchnoi 1968 Wijk aan Zee.



Instead of 9...a5, Black can play 9 Be6, a move earlier: 9...Be6 10. f4 Rc8 11. Kh1 a6 12. Bf3 Nd7 13. f5 Nc4 14 Be2 Nce5 15 fxc6 hxc6 16. Bg5 Nf6 17 Nd5 Nxd5 18 exd5 Qc7 19 c3 Rfe8 20. Bxc4 Qxc4 21. Qd2 Qd3, Asrian- Khalifman, 1999 Las Vegas (previous page).

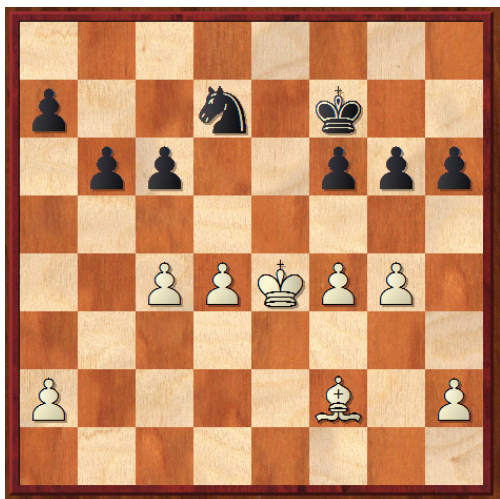
12.b3 Ng4 [missing 12...Qa5!] 13.Bxg4 Bxc3 14.Bxc8 Qxc8 15.Rb1 b5 [15...Nb4 here does the job] 16.Qe2 Nb4 17.Qxb5 Qa6 [17...Nxa2] 18.Qg5 Nxa2 19.Ra1 Nb4 20.Nc4 a2 0-1



RD 1		WESSEX 2	2067	v	BRISTOL 2	1984
1	w	Pleasants, Allan J	2079	1 - 0	Ponter, Ian P	2046
2	b	Tunks, Dominic	2076	1 - 0	Humphreys, Jerry G	2082
3	w	Marsh, Roger DW	2074	½ - ½	Stewart, Joseph	1994
4	b	Clark, Ian C	2072	½ - ½	May, Michael	1898
5	w	Gregory, Keith DF	2056	½ - ½	Richardt, Mike	1963
6	b	Taylor-Bowd, Philip J	2043	½ - ½	Bromilow, Edward T	1922
				4 - 2		

Cambridge University 2 vs Nottinghamshire 1

The hero of this fixture was undoubtedly Andrew Walker, who won an exciting 80 mover to clinch his team the victory. He lost a pawn in the opening, went into the rook and pawn ending a pawn down, gained enough activity to secure a draw... but then went one colossal step further and won the game! This clash is certainly worth a look. David Levens blundered a pawn in his game vs. Ian Gooding and lost after a valiant struggle, whilst two boards down **Kreuzer - Webster** reached an interesting rook and pawn ending where black couldn't make his material advantage count. **Nabbs - Lim** was another Exchange French – albeit one that showed less promise than the board 5 clash. However Terence Nabbs played extremely well in the ensuing ending, converting the slight advantage into a full point. However it seems that black may have missed a chance to hold his position:



Here, Black played 36...Ke6 and lost afterwards to 37 f5+ saw white take victory. However if black had played 36...f5+, white responding with 37 gxf5 and 37...Nf6+ 38 K-moves backwards (if 38 Ke5 Ng4+ picks Bishop on f2) and 38...gxf5. It is a lot harder for white to make progress and likely to end in a draw.

I very much enjoyed **Truman - Chia** as it is in many ways typical of the deceptive nature of certain chess positions! In this instance white launched what looked like a promising kingside attack, but after it petered out it left black with some long term targets (the f and h pawns). This coupled with the power of the bishop pair proved to be white's undoing – a most enjoyable game! **Cooley - Richmond** was equally entertaining.

Cooley, Oliver (2131) - Richmond, Robert (2200) [C02] (Jones, William)

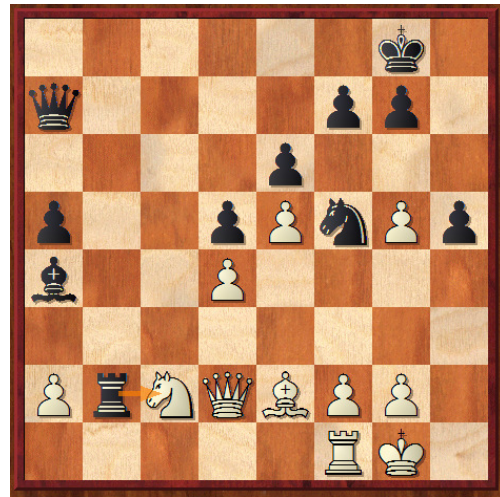
4ncl div3 Cambridge Uni2 vs Notts1 (1)

1.e4 e6 2.d4 d5 3.e5 c5 4.c3 Nc6 5.Nf3 Qb6
6.Be2 Not the most popular of responses. 6. a3 is more common. 6...cxd4 7.cxd4 Nge7 8.Na3 Nf5
9.Nc2 Bd7 [9...Bb4+ 10.Kf1 Be7 11.g4 Nh4
12.Nxh4 Bxh4 13.Kg2 Be7 14.f4 Bd7 15.b3 0-0-0
16.Be3 Kb8 etc..., ½-½ Howell, D-
Nepomniachtchi, I/Chalkidiki 2000/ U10 EU-ch.]



10.0-0 Be7 11.b4 a5 [Both players overlooking... 11...Nxb4! 12.Rb1 Ba4!µ 13.Bd3 Qc7] **12.b5 Nb4 13.Na3 h5 14.Bb2 Na6 15.bxa6 Qxb2 16.axb7 Rb8 17.Nc2 Qxb7 18.Rb1 Qa7 19.Qd2 0-0** A level position here, but as we see later on Black makes his chances available on the queenside. **20.Ng5?**

Perhaps white was looking at targeting the h-pawn to prove it was weak, unfortunately turning his guard down on his strong point. Black turns the game into his favour with... **20...Ba4µ** The defence of the d-pawn is causing white all the problems. As it is white's strong point in the french, it is crucial not to let this go. According to Nimzowitsch, you must overprotect your strong point(s)! **21.Rxb8 Rxb8 22.h4 Bxg5 23.hxg5 Rb2** The pressure is mounting for white, and pawns are starting to drop.



24.Rc1 Rxa2 25.Bxh5 g6 26.Bd1 Bxc2 27.Rxc2 Rxc2 28.Bxc2 Nxd4 A Big D-pawn up in an ending with a passed pawn and a superior Knight saw the game to an end by move 44.

29.Ba4 Qc5 30.Be8 Kf8 31.Bd7 Qb4 32.Qa2 Qe1+ 33.Kh2 Qxe5+ 34.g3 Qe1 35.Qb2 Qb4 36.Qc1 Nf3+ 37.Kg2 Ne5 38.Qc8+ Kg7 39.Be8 Qe4+ 40.Kf1 Qh1+ 41.Ke2 Qf3+ 42.Kf1 d4 43.Qc7 Ng4 44.Qf4 Ne3+ 0-1

RD 1		CAMBRIDGE UNIVERSITY 2	2001	v	NOTTINGHAMSHIRE 1	2035
1	w	Cooley, Oliver JN	2131	0 - 1	Richmond, Robert J	2200
2	b	Lee, Richard WY	2058	0 - 1	Walker, Andrew N	2087
3	w	Gooding, Ian	2013	1 - 0	Levens, David G	1986
4	b	Chia, Ernest PE *	2010	1 - 0	Truman, Richard G	2015
5	w	Kreuzer, Christopher RL	1907	½ - ½	Webster, Richard J	1969
6	b	Lim, Mark	1885	0 - 1	Nabbs, Terence *	1954
				2½-3½		

Halesowen vs Braille Chess Association (2.0-4.0)

Kudos to Halesowen for their performance in this fixture; despite being outrated by an average of 210 elo points per board they came very close to holding Braille Chess Association, one of the strongest teams in the league. Special mention must go to the unrated Glyn Pugh; who scored an excellent victory over IM Colin Crouch, consistently the strongest player in our league. A wonderful result, but William observes that it could have been different...

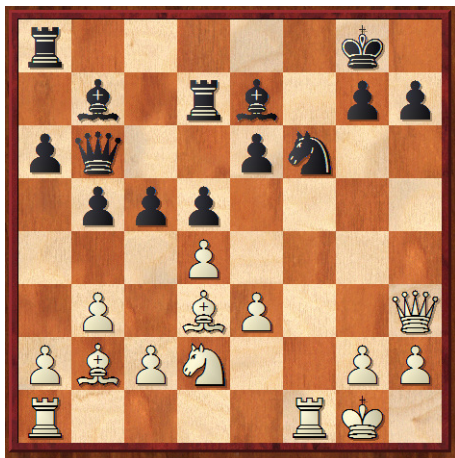


In this position Black played 16...Nxe5 17 dxe5 Bxe5 18 f4 Rad8 19. Qb4 saw white win a piece and the game.

However black could instead play 16...b4, with an advantage.

Possible continuations are: 17 axb4 a5! 18. bxa5 Rxa5 and should see Black with huge attacking chances. Going back to move 18 if white chooses 18 Nxd7 Black can respond axb4!! Threatening mate and should also see Black take the point.

Elsewhere Chris Ross won a long grind against Gary Hope and *Asbury – Burnell* was a solid, uneventful draw. This leaves us with two very interesting games. Firstly *Doran – Mordue* has to be seen in order to truly empathise with Doran and his 20 move loss. Having played fine for the first 17 moves, Doran essayed 18.Bd3? - A pawn sacrifice that gives white some compensation after the line 18.Bxe5 19. dxe5 Qxe5 20. Bd4 Qd5 21.Bxf6. Black can't play Qxd4 because of Bxh7+... Oh wait, Qxd4 puts white in check doesn't it? Doran promptly resigned after this move, the sort of blunder that will affect any players of all abilities when they over-think a position. My deepest sympathies to Mr. Doran. *Hilton - Peck* was just incredibly confusing; black appearing to resign in a better if not winning position. William and I can't help but feel there must be some error with the scoresheet – we hope this entertaining segment will help you reconcile with that disappointment.



Hilton-Peck Board 6 (Jones, William)

It is white to move and white played 16 dxc5 for the simple reason of opening up the diagonal. What white missed, which is a fantastically complex line is that he had the opportunity of playing:

16. Rxf6!! Leading into:
16... Bxf6 17.dxc5 Qxc5 18.Rf1!! This is the move no normal human would see. Not going in straight for the throat, but restricting the black king's exit!

18...Kf7 19.Rxf6+! giving the other rook for only one purpose, the king's head! 19... gxf6 20.Qxh7+ Ke8 21.Qh8+ Ke7 22.Qxf6+ Ke8 23.Bg6+, 1-0. Of course this is only one of a sequence of variations which only a computer has the power to find!

RD 1		HALESOWEN	1889	v	BRILLE CHESS ASSOCIATION	2099
1	w	Pugh, Glyn D	1978	1 - 0	Crouch, Colin S	2346
2	b	Hope, Gary	1938	0 - 1	Ross, Chris N	2207
3	w	Doran, Michael J	1884	0 - 1	Mordue, A Tyson	2286
4	b	Lee, Darren	1890	½ - ½	Armstrong, William G	1966
5	w	Asbury, Jon A	1786	½ - ½	Burnell, Steve	1898
6	b	Peck, Windsor WA	1856	0 - 1	Hilton, Steve H	1891
				2 - 4		

Oxford 3 vs KJCA Kings (1.5-4.0)

It is a shame that Oxford defaulted the bottom board in this fixture, because they gave us (who we hope to be challenging for promotion again this year) an incredibly good game and with the extra player things could have been different. *Langham – Maguire* is worth a look in order that you might marvel at the absurd knight manoeuvre Nb1 – c4 – a3 – b1 – c3 that took place between moves 7 and 14! This is not a criticism of Mr. Langham; I'm just stunned that such an idea doesn't simply lose! A testament to the Colle's solidity. In the end there were a few complications and black may have missed a couple of chances to seize the advantage (although it isn't clear) and the game ended in a perpetual.

Chris Rawlinson got a very solid draw on the top board in a Closed Sicilian, whilst on the board below the other Jones brother scored a nice win in a theoretical line of the French Winawer. Lyall Bayliss made an interesting pawn sacrifice on board 3 to try and unbalanced his game. However Neatherway played very well, first consolidating his position and then forcing black on the defensive, converting in 34 moves.



Lunn-Vikanis (Jones, William)

White found the correct **14.Nb5!** giving him the advantage in an ending where white is the one pressing home for the win **cx b5 15.Qxc7 Bxc7 16.Bxc7 a6 17.e4**

17 g4! is my preferred option. Following a Knight retreat to f6, white can now play 18 Nf4 to give him an even greater advantage after a possible exchange allowing the white the almighty bishop pair. The game saw White convert on move 52. (Editor's note: I think I have a comfortable advantage after 33.b4 – but I wonder if black has some practical chances if he breaks with c5 before then? Missing 38.Rg1 wasn't my finest moment either...)

RD 1		OXFORD 3	1906	v	KJCA KINGS	1947
1	w	Rawlinson, Christopher JA	2048	½ - ½	Jones, William EG	2084
2	b	Ludbrook, Matthew	2011	0 - 1	Jones, Victor GL	2062
3	w	Neatherway, A Philip	1922	1 - 0	Bayliss, Lyall CP	1960
4	b	Vikanis, Eglis *	1762	0 - 1	Lunn, Matthew	1905
5	w	Langham, Rod E *	1786	½ - ½	Maguire, Robert	1825
6	b	default		-½ - 1	Gahir, Jasdeep	1844
				1½ - 4		

Warwickshire Select 2 vs Celtic Tigers 2 (5.0-1.0)

If I had to commend one fixture as 'most entertaining' of the round then the accolade must surely go to *WS2 vs. CT2*. Every game threw up points of interest, there were no quick draws and we were treated to a selection of interesting openings. Talented junior Brandon Clarke won in a crazy Pirc – Mark Thomas sacrificed his queen in an unpleasant position and must have hoped to complicate matters; sadly for him white followed up well and secured a good victory.

Joe Fathallah lost to Paul Webster in a game where he had been consistently better, one board lower his team mate lost after his piece sacrifice failed to bear fruit. And with this a trend

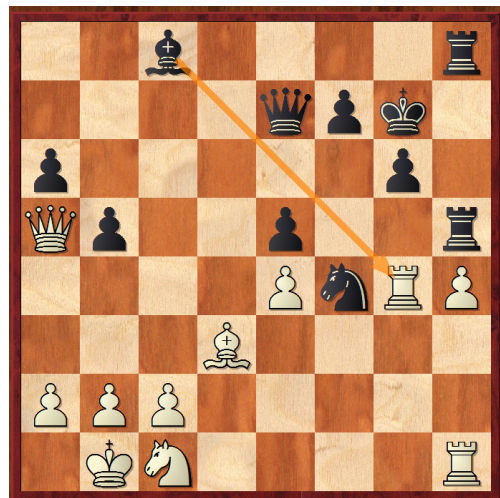
suddenly becomes apparent – Guy Wagner fell on the same sword as his pleasant Dutch position came apart following a miscalculation, the resultant material loss proving decisive.

They will however take some comfort from David Buttell’s win against Ed Goodwin. FM Keith Ruxton has often preached the aesthetic value of a lateral rook move – the winning idea in this game will indulge anyone whose tastes are of the same inclination! I have left the best game until last; a superb win by the underrated Jeremy Fallowfield in an exciting (and comparatively ‘new’) opening against an experienced opponent:

O'Grady,Gary (1914) - Fallowfield,Jeremy (2048) [B75] (Jones, William)

1.e4 c5 2.Nf3 d6 3.d4 cxd4 4.Nxd4 Nf6 5.Nc3 g6 6.f3 Bg7 7.Be3 a6 8.Qd2 Nbd7 9.0–0–0 b5 10.g4 Bb7 The Sicilian Dragadorf- It has the properties of the Sicilian Dragon and Najdorf, hence the double fianchetto and also the placement of the Knight on d7, having the potential to go to b6, c5 and the most typical e5. **11.g5**

[11.h4 This is an alternative for white, to march his pawns on the kingside. Here Shavana, with black, plays h5 to stop this and proves afterwards the h4 pawn is a weakness. 11...h5 12.gxh5 Nxh5 13.Rg1 Rc8 14.Nd5 e6 15.Bg5 Ndf6 16.Nxf6+ Bxf6 17.Nb3 Qc7 18.Bxf6 Nxf6 19.Bd3 Ke7 20.Qe1 e5 21.f4 Nh5 22.fxe5 dxe5 23.Qb4+ Kf6 24.Na5 Ba8 25.Kb1 Nf4 26.Qe1 Kg7 27.Nb3 Rh5 28.Nc1 Rch8 29.Rg4 Qe7 30.Qa5 Bb7 31.Rh1 Bc8 (see diagram)

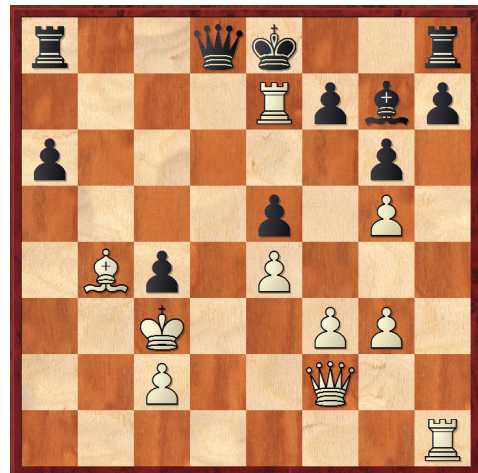


32.Rgg1 Rxh4 33.Rxh4 Rxh4 The h4 pawn is picked up, a bit of hard work still left to do to seal the point. 34.Qc3 Bb7 35.Qe1 Rh2 36.Nb3 Qc7 37.Qd1 Qb6 38.Rf1 Qe3 39.Nc1 Bc8 40.Rh1 Rxh1 41.Qxh1 Bb7 42.a3 g5 43.Qf1 g4 44.Qh1 Qf2 45.b3 Bc8 46.Kb2 g3 47.Qh4 Ng6 48.Qg5 f6 49.Qh5 g2 0–1 /Plovdiv 2008/CBM 124]

11...Nh5 12.Nde2

[12.Nce2 This is an interesting response. By playing g5 early, forcing the knight to h5, Berg 2601 uses the other knight to force an exchange, opening the h-file for his rook. 12...Nb6 13.Ng3 Nxc3 14.hxc3 d5 15.Qf2 Nc4 16.Bxc4 bxc4 17.Ne2 Qa5 18.Bd4 I have a feeling this was all in Berg’s preparation. The moves played are of a high quality, he is 2600 material, as we shall see... 18...e5 19.Bb6 Qxa2 20.Nc3 Qa1+ 21.Kd2 Qxb2 22.Rb1 Qa3 23.Bc5 Qa5 24.Rxb7 d4 25.Bb4 dxc3+ 26.Kxc3 Qd8 27.Re7+

(see diagram, Berg,E (2601)-Shanava,K (2519))



Simply fantastic! How this rook gets on e7 so early is remarkable! 27...Qxe7 28.Bxe7 Kxe7 29.Qc5+ 1–0 Berg,E (2601)-Shanava,K (2519)/Plovdiv 2008/CBM 124]

12...Ne5 13.Nd4 Referring to the Berg-Shanava game, the manoeuvre is clearly inferior, as the defence of the f-pawn stops white playing what he wants to, thus gaining time for black.

13...Rc8 14.f4 Nc4 15.Bxc4 Rxc4 16.Nd5 e6 17.Nc3 another retreat from the knight, even though a slight weakening has occurred at d6.

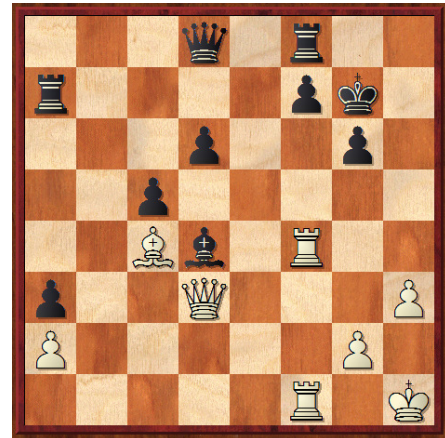
17...b4 18.Qd3 Qc8 19.Nce2 e5! (see diagram)
good move- forcing a favourable Rook vs. 2 minor pieces situation, and more.



Lutton,Arnold (1823) - Scott,David (2058) [B23]

1.e4 c5 2.Nc3 Nc6 3.f4 g6 4.Nf3 Bg7 5.Be2 d6 6.0-0 Nf6 7.d3 Bg4 8.Qe1 0-0 9.h3 Bxf3
10.Bxf3 Nd4 11.Bd1 b5 12.Ne2 Nd7 13.c3 Nxe2+ 14.Qxe2 Qb6 15.Kh1 b4 16.Bb3 a5
17.f5 bxc3 18.fxc6 hxc6 19.Qg4 Ne5 20.Qe2 Nxd3

[20...a4μ leads to a winning game after... 21.Bd5 Rab8
22.bxc3 e6 23.Bc4 Nxc4 24.dxc4 Bxc3 25.Bh6 Bxa1
26.Bxf8 Be5 giving black the upperhand.] **21.Qxd3
cxb2 22.Bxb2 Bxb2 23.Rab1 a4** Here white missed a
way to turn things round with... **24.Bd5** [24.Bxf7+
Rxf7 (24...Kg7 25.e5± dxe5 26.Rxb2 Qd6 27.Qe4)
25.Rxf7 Kxf7 26.Qd5+ Kg7 27.Qxa8] **24...Ra7 25.e5
Kg7 26.Rf2 a3 27.Rbf1 e6** Black is still winning, but
the game swings in White's favour due to a decisive
blunder... **28.Bxe6 Bxe5 29.Bc4 Bd4 30.Rf4 Qd8??**



**31.Rxd4!± Ra4 32.Rxd6 Qh4 33.Rxf7+ Rxf7
34.Qxg6+ Kh8 35.Bxf7 Qe1+ 36.Kh2 1-0**

RD 1		OXFORD 2	2055	v	SCS	1747
1	w	Starkie, Ray J	2130	½ - ½	Baptie, Justin P	2095
2	b	Burt, William	2162	0 - 1	Moyse, Nigel J	2055
3	w	Bruce, David J	2079	0 - 1	Bogoda, Sagara T	1874
4	b	Scott, David A	2058	0 - 1	Lutton, J Arnold	1823
5	w	Hadi, Justin *	1970	1 - 0	Bogoda, Nathasha O (F)	1658
6	b	Vikanis, Georgs *	1930	1 - 0	Swain, William	978
				2½-3½		

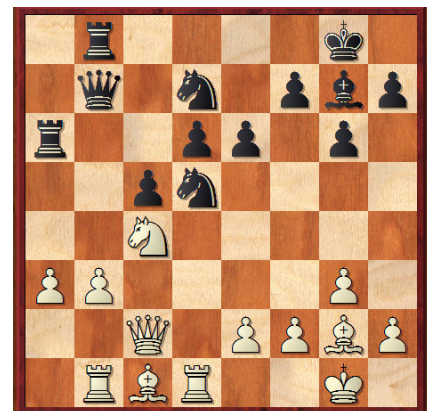
Hackney vs The Full Ponty (2.0-4.0)

With this fixture, we were treated to yet another upset, with The Full Ponty scoring a comfortable victory against higher rated opposition. The tie is also notable for containing the shortest game of the day, *Bowmer – Adams* peacefully concluding after just 9 moves. *Sully – Chin* was a slightly more inspiring draw, but the illegibility of the scoresheets means that we will never be privy to the finer details. It was a French Advance, looks unbalanced at move 18. *Gilbert - Vives* suffers a similar fate, although white's advantage was already fairly conclusive after the game imputers decided that enough was enough! David Robinson won a good game in the London System (sounds paradoxical – I know) following a nice pawn win, one board down Dashiell Shaw won an equally long game following an equally profitable pawn grab! William has annotated the top and fourth board clashes:

Reid,John (2266) - Gilbert,Jonathan (2058) [A58] (*Jones, William*)

1.d4 Nf6 2.c4 c5 3.d5 b5 4.cxb5 a6 5.bxa6 g6 6.Nc3 Bxa6 7.Nf3 d6 8.g3 Bg7 9.Bg2 Nbd7
10.Rb1 0-0 11.0-0 Qb6 12.Qc2 Qb7 13.Rd1 Bc4
14.b3 Bxd5 15.Nxd5 Nxd5 16.Nd2 e6 17.Nc4 Ra6
18.a3 Rb8? (diagram)

19.Rd3?



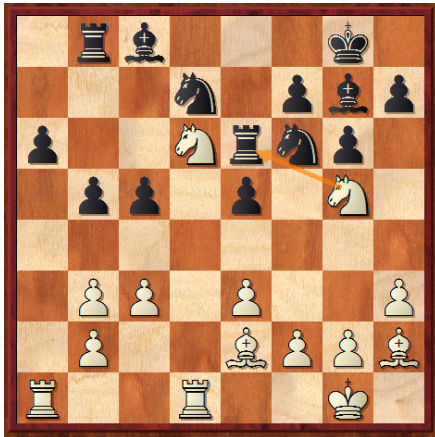
[19.e4! a difficult move to consider playing due to the next 'obvious' move 19...Nc3 20.e5 a bold response giving white the winning chances. 20...Nd5 21.exd6±]

19...Ne5 20.Nxe5 Bxe5 21.Qc4 Rb6 22.Kh1 Bg7 23.Bf3 Be5 24.Kg2 Bg7 25.Bxd5 exd5 26.Rxd5 Re8 27.e4 Bd4 28.f3 Re6 29.b4 Qa7 30.Rb3 Qa4 31.Bh6 Bg7 32.Be3 Rc6 33.Rd2 h5 34.Rc2 cxb4 35.Qxc6 Qxb3 36.Re2 bxa3 37.Bf4 Bb2 38.Re3 Qd1 39.Qa8+ Kg7 40.Rxa3 Qe2+ 41.Kh3 Qf1+ 42.Kh4 Bf6+ 43.Bg5 Bxg5+ 44.Kxg5 Re5+ 45.Kh4 g5+ 0-1

Robinson,David (1967) - Hughes,Charles (2050) [A48]

1.d4 Nf6 2.Nf3 g6 3.Bf4 Bg7 4.e3 0-0 5.h3 d6 6.Be2 Nbd7 7.0-0 Re8 8.Bh2 A Colle System with the Bf4-h2. King's Indian Players generally do not like set ups such as this because they are not considered as exciting as other main lines of the KID.

KID players like the straightforward but clever attacking plans from this defence, such exponents at top level include Hebden and Radjabov. 8...c5 9.c3 Qb6 10.Qb3 Qxb3 11.axb3 A queen exchange relinquishes black's attacking chances, not that there were any! The position that has arisen is a simple set-up, which psychologically should favour white! 11...e5 12.dxe5 dxe5 13.Na3 Heading for d6 as a hole has been created due to a somewhat premature advance, despite the fact that the bishop on h2 has to be restricted to a huge diagonal scope from h2-b8. 13...a6 14.Nb5 Rb8 15.Nd6 Re6 16.Rfd1 b5 17.Ng5



Re7 18.Nxc8 Rxc8 19.Rxa6 Winning advantage has been set. 19...c4 20.bxc4 bxc4 21.Ra4 Nb6 22.Rb4 Nfd7 23.Rd6 e4 24.h4 h6 25.Nh3 Re6 26.Rxe6 fxe6 27.Nf4 Kf7 28.Bg4 Rc6 29.Kf1 g5 30.hxg5 hxg5 31.Ne2 e5 32.Ng3 Nc5 33.Bf5 Kf6 The black pawns are beginning to look very weak, and were picked up later on in the game.

34.Bxe4 Nxe4 35.Nxe4+ Kf5 36.Nd2 Bf8 37.Rb5 Nd7 38.e4+ Ke6 39.Nf3 Bd6 40.Nxg5+ Kf6 41.Nf3 Nc5 42.Ke2 Ke6 43.Nd2 Nd7 44.g4 Nf6 45.f3 Nh7 46.Nf1 Ra6 47.Ne3 Rc6 48.Nf5 Bc7 49.Rb7 Ng5 50.Nd4+ exd4 51.Rxc7 d3+ 52.Ke3 Rb6 53.Rxc4 Rxb2 54.Bg3 d2 55.Rd4 Rc2 56.Rd6+ Ke7 57.Rd5 d1Q 58.Rxd1 Rxc3+ 59.Kd4 Rxf3 60.Bh4 Kf6 61.Rb1 Kg6 62.Rb6+ Rf6 63.Rxf6+ Kxf6 64.Kd5 Kg6 65.Bxg5 Kxg5 The opening of the a-file gave white the play he needed. Later on a d6 hole was created, giving white more areas to infiltrate and pick up material slowly. 1-0

RD		HACKNEY	2072	v	THE FULL PONTY	1998
1	w	Reid, John	2266	0 - 1	Gilbert, Jonathan A	2058
2	b	Chin, Francis CW	2223	½ - ½	Sully, David J	2119
3	w	Bowmer, Kevin	2042	½ - ½	Adams, Mark A	2026
4	b	Hughes, Charles	2050	0 - 1	Robinson, David	1967
5	w	Shaw, Dashiell L	1910	1 - 0	Dixon, Chris	1953
6	b	Vives, Pepe	1938	0 - 1	Gilbert, Colin	1864
				2 - 4		

AMCA Hippos vs E2E4.org.uk 2 (2.5-3.5)

Adults are notorious for their dislike of playing juniors; I cannot therefore help but empathise with e2e4.org.uk 2's plight as they faced a team that boasted five amongst their number. Still, they were not daunted by this task and ended up scoring a narrow victory over the young side. **Holland – Jones** and **Van Der Westhuizen – Malhotra** were both drawn in under 25 moves; the former is however worth a look due to the flourishes that occurred shortly before the game ended. Alexander Mapletoft ground out a long win against Catriona Meechan, whilst two boards higher James Foster (one of 3 that play in the 4ncl) won a nice game against Edward Venmore-Rowland following some tactics. **Dean – O'Neill** is utterly confused by the scoresheets being deemed illegible when white had a substantial advantage (+3) – all credit to Tom for turning that around! **Gibson – Andreev** is analysed below:

Gibson, Christopher (1970) - Andreev, Peter (1895) [E80] (Jones, William)

1.d4 Nf6 2.c4 g6 3.Nc3 Bg7 4.e4 d6 5.f3 Nc6 6.Be3 e5 7.d5 Nd4 8.Nge2 c5 9.dxc6 bxc6 10.Nxd4 exd4 11.Bxd4 0–0 12.Be2 Rb8 13.Qd2 Nh5 14.Bf2 [14.Bxg7 Nxc7 15.0–0–0
White is a pawn up and by castling queenside he can pick up another, and it is hard to find compensation for black. 15...Be6 16.Qxd6 Qb6 17.b3 Rfd8 18.Qf4] **14...Nf4??**



an interesting move, unfortunately fails to precise play, which cannot be guaranteed by anyone!

15.Qxf4 Rxb2 16.Rc1 Qa5 17.Qe3 Re8 18.0–0??
There were a few ways to hold on to the piece and the winning advantage... [18.Kf1 Ba6 19.Be1; 18.Bg3 Qb4 19.Qd3 d5 20.cxd5 cxd5 21.Kf1 Bxc3 22.Qxc3 dxe4 23.Qxb4 Rxb4 24.fxe4 Rbx4 25.Bf3± is a sample variation of what could have happened.]

18...Bxc3 19.Rxc3 Rxe2 20.Qxe2 Qxc3 21.Rd1 Rd8 22.Bd4 Qa5 23.Bf6 Qc5+ 24.Kh1 Re8 25.Qd2 Re6 26.Bd4

[26.e5!+- from a won position to a minimal advantage and now if 26. e5 was played, a won game was certain for white. 26...d5 forced (26...Qxc4 27.Qh6) 27.cxd5 cxd5 (27...Qxd5 28.Qc2) 28.Rc1 Qf8 29.Qxd5]

26...Qxc4 27.Qg5 Bd7 28.Qh6 f6 29.Qh4 Qa4 30.Qe1 c5 31.Ba1 Qxa2 32.Qc3 Bb5 and all of a sudden black is 2 pawns up with the advantage, another turnaround except this time for black! **33.h3 a6 34.Kh2 Kf7 35.Qe3 Qe2 36.Qc1 g5 37.Re1** and surprisingly despite being 2 pawns up, a draw was agreed. 1/2–1/2

RD 1		AMCA HIPPOS	1777	v	E2E4.ORG.UK 2	1871
1	w	Holland, James P	1943	½ - ½	Jones, Christopher M	1964
2	b	Andreev, Peter	1895	½ - ½	Gibson, Christopher A	1970
3	w	Venmore-Rowland, Edward PC	1834	0 - 1	Foster, James M	1876
4	b	Malhotra, Tarun	1730	½ - ½	Van Der Westhuizen, Charles V	1824
5	w	Meechan, Catriona (F)	1738	0 - 1	Mapletoft, Alexander J	1862
6	b	O'Neill, Tom C	1523	1 - 0	Dean, Michael	1730
				2½-3½		

Guernsey Mates vs Gloucestershire Gambits (2.0-4.0)

New boys Guernsey Mates were gifted a tricky start to the 4ncl in the form of Gloucestershire Gambits, ultimately they were unable to overcome the rating difference and the latter side picked up a good victory. Mark Ozanne was the only victory for the Guernsey side, winning a good game following some inaccurate opening play by Daniel Lambourne. The excitement and complications of *Dodwell – Kumar* died down very early on and a draw was agreed; four boards up a longer but more static game ended in the same result.

John Waterfield scored a decent victory after an unusual tactic, one board lower his teammate won after his opponents Benko style sacrifice didn't quite pay off. Geoffrey Taylor rounded off the victory for the Gambits, with a good victory in an unusual Sicilian:

O'Connor,Jonathan (1675) - Taylor,Geoffrey (1962) [B21] (Jones, William)

1.e4 c5 2.d4 cxd4 3.c3 d3 declining the Morra Gambit- a sensible choice or should you just pick up an 'easy' pawn, some may say??? **4.Bxd3 Nc6 5.Nf3 d6 6.0-0 Nf6 7.Qc2 Bd7 8.Bf4 e5 9.Bg3 Be7 10.Nbd2 Qc7 11.Rad1 0-0 12.h3 Rac8 13.Rfe1? Nb4 14.Qb1 Nxd3 15.Qxd3 Be6**

Black has more than equalised. In some respect, declining the pawn seems now a good choice. Black has the bishop pair and potential queenside counterplay.

16.Re3 Nh5 17.Bh2 g6 18.Qc2 a6 19.b3 b5 queenside counterplay has begun. **20.Nf1 Qa5 21.Qb2 Rc6 22.g4 Ng7 23.Ng3 Rfc8 24.Ne2 h5** Black now seeks the weakness on the opposite flank. White's pieces are certainly not ideally placed, they are merely defending what black is attacking. **24...h5** gives black a certain advantage.



25.Kg2 hxg4 26.hxg4 Bxg4 27.Rh1 Nh5 28.Qd2 Kg7 A pawn to the good having Black convert on move 42. **29.Bxe5+ dxe5 30.Nxe5 Bxe2 31.Nxc6 Rxc6 32.Rxe2 Qxc3 33.Rd1 Qf6 34.Re3 Nf4+ 35.Kf1 Qh4 36.Rg3 Qh1+ 37.Rg1 Qh3+ 38.Ke1 Ng2+ 39.Ke2 Rd6 40.Qb2+ Bf6 41.Qc2 Nf4+ 42.Ke1 0-1**

RD		GUERNSEY MATES	1883	v	GLOUCESTERSHIRE GAMBITS	1993
1	w	Ozanne, Mark S *	2028	1 - 0	Lambourne, Daniel M	2001
2	b	Jamieson, Ian M	2002	½ - ½	Martin, Peter	2066
3	w	Carpenter, Paul	1826	0 - 1	Waterfield, John W	1988
4	b	Carpenter, Richard	1962	0 - 1	Meade, Philip J	1960
5	w	O'Connor, Jonathan T	1675	0 - 1	Taylor, Geoffrey P	1962
6	b	Kumar, Shankar	1805	½ - ½	Dodwell, Phil	1978
				2 - 4		

3CS vs Guildford-A&DC 4 (4.0-2.0)

May I be among the first to welcome back the 3Cs to the 4ncl! They were among the strongest teams in the league long before I started playing; with their current squad I cannot help but feel they have extremely good chances of getting promoted and regaining their

former glory. Their win against Guildford-A&DC 4 was perhaps not as convincing as they would have liked, but a useful result nonetheless.

Bryant – Longson emerged as one of the shocks of the round, with Alexander Longson falling for a mate in 2 having been in a superior if not winning position. Guildford's other win came from the experienced Ian Deswarte, who outplayed his opponent on the black side of a King's Gambit. **Ward – Gittens** was equally brief; I cannot however help but feel that white's resignation was a little premature. The ensuing ending will be a bit grim, but he may have some drawing chances if his opponent doesn't play accurately. Ali Jaunooby played a good game against Philip Armour to gain his team another point, but in not so exciting a fashion as his teammates on 1 and 3:

James,Dale (2171) - Shaw,Matthew (1956) [C00] (Jones, William)

1.e4 e6 2.Nf3 d5 3.e5 c5 4.c4 Ne7 5.Nc3 Nbc6 6.cxd5 Nxd5 7.Bb5 a6 8.Bxc6+ bxc6 9.0–0 Be7 10.Qa4 Bb7 11.Qg4 0–0 12.Ne4 Kh8 13.d3 Nb4 14.Rd1 c4 15.Bg5 Nxd3 16.Nd6 Qc7 17.Bxe7 Qxe7 18.Nxc4 Nb4 19.Ng5 c5 20.a3 Nc6 21.Rd3 h6 22.Rh3 Rad8 23.Nf3 Rd3 24.Rg3 g6 25.Qh4

Kg7 [The better response would be to exchange queens. It is obvious White's queen is the one that could be doing potential harm so having the chance to get rid of it would be a sensible thing to do. 25...Qxh4 26.Nxh4 Rd4 27.Nd6 Rxh4 28.Nxb7 c4 This variation leaves Black better with pawns on e5 hanging and a Rb8 would leave b2 hanging, therefore giving black the advantage.]

26.Nd6 g5 27.Nxb7 (black resigns) unfortunately black misjudged this and so white's queen did the damage in the end. Although it is not won yet.



27...Qxb7 28.Qe4 Rfd8 29.h4 Qxb2 30.Re1 is a possible variation, this may seem like resignation was premature for black in this case. **30...Rd1** and it is another game... **1–0**

Ashton,Adam (2319) - Eckloff,Colin (2100) [B01] (Jones, William)

1.e4 d5 2.exd5 Nf6 3.Be2 Qxd5 4.Nf3 Bg4 5.c4 Qf5 6.d4 Nc6 7.h3 Bxf3 8.Bxf3 0–0–0 9.Be3 e5 10.d5 Nb4 11.0–0

11...h5

[11...Nc2 The obvious move in this position and yet it was missed! Both players having overlooked a simple exchange could have been won! 12.g4 Qg6 13.g5 Nxa1]

12.Nc3 g5 13.Qb1 Qxb1 14.Raxb1 g4 15.Be2 gxh3 16.gxh3 Nc2 17.Bd3 Nxe3 18.fxe3 Rg8+ 19.Kh2 e4 20.Bxe4 Nxe4 21.Nxe4 Bh6 22.Nf6 Rg6 23.e4 Bg7 24.e5 Bxf6 25.Rxf6 Rg5 26.Re1 c5 27.d6 Re8 28.Rxf7 Rxe5 29.Rxe5 Rxe5 30.Kg3 Re2 31.Rc7+ Kb8 32.Re7 1–0



RD 1		3CS	2100	v	GUILDFORD-A&DC 4	1903
1	w	Ashton, Adam G	2319	1 - 0	Eckloff, Colin	2100
2	b	Longson, Alexander	2254	0 - 1	Bryant, Richard BE	1945
3	w	James, Dale R	2171	1 - 0	Shaw, Matthew H	1956
4	b	Jaunooby, Ali Reza	2171	1 - 0	Armour, Philip	1850
5	w	Clements, Thomas A	1962	0 - 1	Deswarte, Ian	1900
6	b	Gittens, Nathan L	1722	1 - 0	Ward, Matthew J	1669
				4 - 2		

FCA Solutions 2 vs Rhyfelwyr Essyllwg (5.0-1.0)

May I also take the opportunity of welcoming Rhyfelwyr Essyllwg to the 4ncl! With a squad consisting of most of Wales' best players, they must surely also be setting their sights on promotion. Therefore their fiery baptism at the hands of FCA Solutions 2 must have come as something of a shock!

Tom Brown's quick win against Adrian Matthews will provide sparse consolation in a fixture where they didn't seem to have any luck. Femi Adebajo and John Shaw secured their victories following material gains in the opening; elsewhere Jeremy Fraser-Mitchell played extremely well and conclusively showed that his material advantage (obtained going into the ending) was of greater importance than his opponent's activity. Plus the opening is extremely unusual – well worth a look!

Majer,Chris (2054) - Spice,Alan (2169) [C02] (Jones, William)

1.e4 e6 2.d4 d5 3.e5 c5 4.c3 Nc6 5.Nf3 Qb6 6.Bd3 cxd4 7.cxd4 Bd7 8.0-0 Nxd4 9.Nxd4 Qxd4 10.Nc3 Qxe5 Some may say a risky gambit to take on, it certainly is if you take both pawns. Black could retreat back to b6, but this is another game... **11.Re1 Qb8 12.Nxd5 Bd6 13.Qg4 Kf8 14.Bd2 h5 15.Qh3 Bc6 16.Ne3**

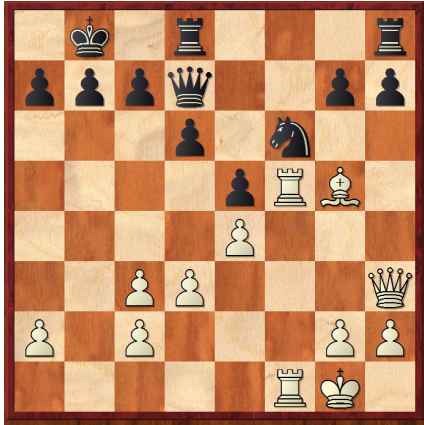
All 16 moves played here are correct according to the Fritz 11 Opening book, this is the point where black makes the first deviation! **16...b5?**

[16...Nf6 this move is correct. It looks much more sensible that launching the b-pawn down. As black's development is lagging behind, this has to be sorted out. Generally speaking, b5 is a big weakness and shown in a few moves time. 17.Nc4 Bc7 18.Bc3 Nd5 19.Ne5 Nxc3 20.Nxf7 Kxf7 21.Qxe6+ Kf8 22.Qf5+ Kg8 23.Qe6+ Kf8 24.Qf5+ Kg8 1/2-1/2 Wow! A 24 move forced draw!]



17.Rac1 Qb7 18.Nc2 a6? Nf6 was necessary, to stop the Bishop going to e4 after Nb4.

19.Nb4± Bd7 20.Be4 Qb8 21.Bxa8 Qxa8 22.Qd3 Qb8 23.Nxa6 Qb6 24.Bb4 Qxa6 25.Bxd6+ Ke8 26.Red1 Nf6 27.Ba3 Nd5 28.Qe4 Qb7 29.Bc5 Rh6 30.Qe5 Rg6 31.g3 f6 32.Qd6 Kd8 33.Qf8+ Be8 34.Qd6+ Bd7 35.Re1 f5 36.Qf8+ Be8 37.Qd6+ Bd7 38.Be3 h4 39.Bf4 hxg3 40.hxg3 Nxf4 41.Qxf4 Rh6 42.f3 Qb6+ 43.Kg2 Rh5 44.Red1 e5 45.Qd2 Qe6 46.Qa5+ Ke8 47.Rc7 Bc6 48.Rxc6 1-0



Morris-Williamson Board 2

White has the advantage, about to win a pawn but unfortunately mistimed a combination.

17. Rxf6?? Qxh3 18. gxh3 gxf6 19 Bh4 (Bxf6 Rhg8+ winning for black): Hard luck for the white pieces.

RD 1		FCA SOLUTIONS 2	1987	v	RHYFELWYR ESSYLLWG	2079
1	w	Majer, Chris E	2054	1 - 0	Spice, Alan P	2169
2	b	Williamson, Kevin J	2045	1 - 0	Morris, Gareth L	2147
3	w	Fraser-Mitchell, Jeremy N	2002	1 - 0	Trevelyan, John	2166
4	b	Adebajo, Olufemi	1952	1 - 0	Smith, Olivia (F)	2026
5	w	Matthews, Adrian MS	1936	0 - 1	Brown, Tom	2051
6	b	Shaw, John S	1930	1 - 0	Blackburn, Suzy G (F)	1912
				5 - 1		

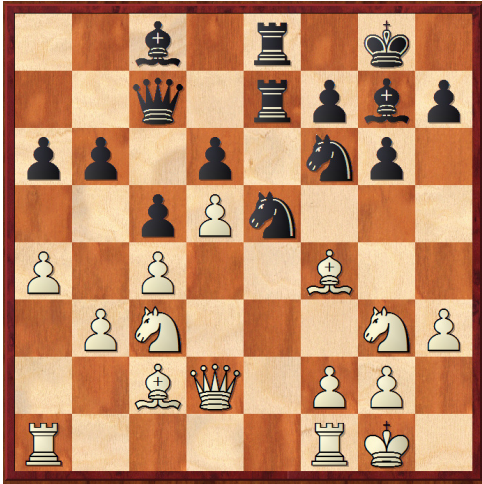
Sussex Smart Controls vs Sambuca Black Sheep (1.0-5.0)

And for the third match in a row we welcome a new team to the fore! Sambuca Black Sheep are the newly created second team of the Sambuca Sharks, but the team fielded this weekend was of a similar standard to Sharks own last year. Certainly they are a force to be contended with, starting their promotion campaign in fine style following a convincing win against Sussex Smart Controls.

Salimbeni – Ackley was an unbalanced game that ended as a draw, worth studying to determine if black had anything in the final position. *Jones – Russell* ended with the same result, although Chris will be disappointed having been better for much of the ending – the R + N vs. R ending was inevitable so a draw was agreed. Chris Yates lost a couple of pawns early on and the game soon followed, whilst one board up Phil Makepeace won after David Fryer blundered a piece (his position was already extremely difficult). See if you can spot a nice white win after black's 26.Re6. Ben Edgell won in a similar fashion; his opponent giving up material after playing a bad move in an already difficult position. Far and away my favourite game of this fixture was played on the bottom board; Gareth Harley-Yeo's excellent win on the white side of a KID:

Harley-Yeo, Gareth (2059) - Woods, Timothy (1810) [E70] (Jones, William)

1.d4 d6 2.c4 Nf6 3.Nc3 g6 4.e4 Bg7 5.Nge2 0-0 6.Ng3 c5 7.d5 e6 8.Be2 exd5 9.exd5 Re8 10.0-0 a6 11.Bf4 b6 12.Qd2 Ra7 13.h3 Rae7 a good plan to organise his rooks on the open e-file, a strategy that Tal employed in a few games when he was playing a Benoni-like set-up with the black pieces. 14.Bd3 Qc7 15.a4 Nbd7 16.b3 Ne5 17.Bc2



With more pieces on, white retains his slight space advantage, although the position looks rather equal. **17...h5?** a bit too ambitious, the h4 advance can easily be stopped by the following move. It makes sense white wants to deflect this knight away to get his c8 bishop out, but as a result creates a slight weakening.

18.Bg5 Bxh3 19.f4± In 2 moves unfortunately for black, he has a losing position. What black had to do was wait a bit and as black became a bit impatient it is costing him his bishop. It is unfortunate in these sort of set-ups, black is not going to get more than equal.

First he has to gain equality and then build from there. **19...Bxg2 20.fxe5 Ng4 21.Kxg2 Rxe5 22.Rae1 1-0**

RD 1		SUSSEX SMART CONTROLS	2018	v	SAMBUCA BLACK SHEEP	2063
1	w	Salimbeni, George PW	2163	½ - ½	Ackley, Peter JE	2095
2	b	Oates, David R	2159	0 - 1	Edgell, Ben P	2100
3	w	Jones, Chris	2070	½ - ½	Russell, Christopher	2065
4	b	Fryer, David W	2058	0 - 1	Makepeace, Phillip J	2042
5	w	Yates, Christopher	1850	0 - 1	Healey, Michael W	2016
6	b	Woods, Timothy J	1810	0 - 1	Harley-Yeo, Gareth	2059
				1 - 5		

Bristol 3 vs ICENI (1.0-5.0)

Bristol 3 were always going to find this fixture tough, as an average rating deficit of 400 points is nothing but negligible! Iceni won convincingly on boards 2, 4 and 6, but elsewhere things weren't so easy. Kells Stanton fought valiantly against John Feavyour following his material loss but couldn't make anything of it and eventually went down. Neil Dunlop's win on 1 was notable for its wonderful fighting spirit; defending well in a worse ending and capitalising on a blunder to turn the game around. William has annotated my namesake's win:

Stanton,Colin (1746) - Lunn,Timothy (2055) [A26]

1.c4 e5 2.Nc3 Nc6 3.g3 g6 4.Bg2 Bg7 5.Nf3 d6 6.d3 f5 7.0-0 Nf6 8.Nd5 0-0 9.Bg5 Be6 10.e4 Instead of e4, other alternatives are 10 Rc1, Qa4.followed by ideas of a queenside expansion. With 10 e4 it seems that the opening of the f-file will benefit black's attacking chances. We can understand why white plays 10. e4 to establish his ground in the centre along with a strong knight on d5, although it may prove a drawback, as we shall see later. **10...fxe4 11.dxe4 Qd7 12.Re1** Leaving defence to an important f-pawn. Of course it isn't attacked now, but potentially the f-file is black's line of play.

12...Rf7 13.Qd2 Raf8 14.Qd3 The wasted move by white may not seem a big deal, but the extra move could have been used to move the rook back to f1 or provide some other defensive measures. Re2, Raf1 may be possible. **14...Bg4 15.Nd2 Nd4**



16.f3? Nxd5 17.cxd5 Bxf3µ If the rook moved back, and the queen had moved to d3 in one move, this would not have happened.

18.Bf1 Bg4 19.Be3 Bh3 20.Bg2 Bxg2 21.Kxg2 Nf3 22.Rf1 Nxd2 23.Bxd2 Qa4 24.Rxf7 Rxf7 25.b4 a6 26.a3 h5 27.Rf1 Rxf1 28.Kxf1 Qb5µ

A queen exchange and a pawn up should grind out the victory sooner or later. 29.Ke2 Kh7 30.Bg5 Bh6 31.Bd8 Qd7 32.Bf6 Qh3 33.Qf3 Qxh2+ 34.Qf2 Qxf2+ 35.Kxf2 Kg8 36.Bd8 flag 0-1

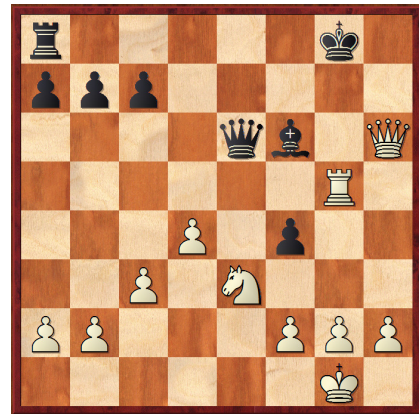
RD 1		BRISTOL 3	1650	v	ICENI	2053
1	w	Dunlop, Neil J	1802	1 - 0	Crombleholme, Alan K	2106
2	b	Woolgar, Steven G	1698	0 - 1	Reynolds, D Ian W	2096
3	w	Stanton, Colin	1746	0 - 1	Lunn, Timothy	2055
4	b	Woodruff, David G	1666	0 - 1	Ruthen, Stephen W	2093
5	w	Stanton, Kells	1682	0 - 1	Feavyour, John A	2076
6	b	Taylor, John-Paul *	1306	0 - 1	Szymanski, Mark	1890
				1 - 5		

KJCA Knights vs AMCA Rhinos (1.0-5.0)

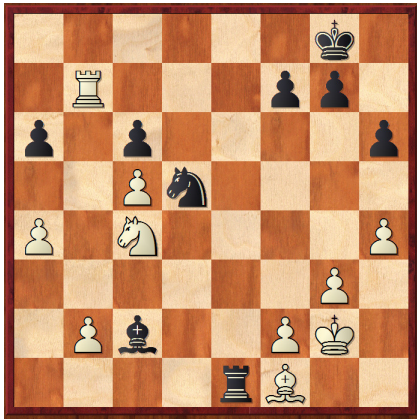
In many ways this fixture shares qualities with the one above. A much lower rated team fought bravely against strong opposition, ultimately falling by the wayside but demonstrating great fighting spirit in the process!

Balendran - Tart effectively concluded after white's 16.Bxb4 – although white's grotty, unclean kill meant the game went on much longer than it might have. Nicholas Clanchy fell to Daniel Sparkes' kingside attack, whilst Khalid and Davis fell foul of material blunders in the opening. Andrew Marley ground down Barnaby Paul in an equalish semi-ending (But Paul missed a chance, see below), but the most convincing win came on board 3 in a shock victory for the KJCA Knights:

Murphy, Conor (1794) - Stille, Alexander (2054) [C55]
1.e4 e5 2.Nf3 Nc6 3.Bc4 Nf6 4.d3 Be7 5.c3 0-0 6.0-0 d6 7.Nbd2 [7.Bb3 a necessary retreat or else Na5 is going to start chasing the knight and expansion on the queenside is a possibility of counterplay for black.]
7...Be6 8.Re1 Bxc4 9.Nxc4 White has a slight plus. White has the space advantage, the centre and what black can do is try and exchange pieces to relieve himself of his space deficit. The next move can only help white: A big oversight for black to blunder a central pawn. **9...d5??**
10.exd5 Qxd5 11.Ncxe5 Nxe5 12.Rxe5 Qd7 13.Bg5 h6 14.Bh4 g5 15.Bg3 Nh5 16.d4 f5 17.Qb3+ Kh7 18.Rd5



Qc8 19.Re1 Bd8 20.Be5 Nf6 21.Bxf6 Bxf6 22.Ne5 Re8 23.Re3 Re7 24.Nc4 Rxc3 25.Nxe3 f4 White in a won position, saw this game home with the following: **26.Qc2+ Kh8 27.Qg6 Qe6 28.Qxh6+ Kg8 29.Rxg5+** (see diagram)



Marley-Paul Board 6

After defending well in this position (see left), Barnaby Paul missed the following

35...Bxa4 [35...Rxf1 missing a good endgame opportunity with a Rook vs 2 minor pieces. 36.Kxf1 Bd3+ 37.Ke1 Bxc4 38.Rb8+ Kh7 39.Rc8 Nb4]

36.Bd3 Re8 37.Nd6 Rf8 38.Bxa6 Bc2 39.Be2 Bg6 40.Bf3 Ra8 41.Bxd5 cxd5 42.c6 d4 43.c7 Kh7 44.Rb8 d3 45.Rxa8 d2 46.c8Q Bh5 47.Qg8+ 1-0

RD 1		KJCA KNIGHTS	1773	v	AMCA RHINOS	2016
1	w	Balendran, Baven	1858	0 - 1	Tart, Peter K	2078
2	b	Clanchy, Nicholas	1858	0 - 1	Sparkes, Daniel A	2066
3	w	Murphy, Conor	1794	1 - 0	Stille, Alexander M	2054
4	b	Kalid, Raphael	1786	0 - 1	McLaughlin, Noel S	2022
5	w	Davis, Alexei	1730	0 - 1	Owens, Trefor H	1946
6	b	Paul, Barnaby J	1610	0 - 1	Marley, Andrew	1930
				1 - 5		

Nottinghamshire 2 vs Beauty and the Beasts (4.0-2.0)

Another surprising result (there were a few this round!), also one notable for including the only defeat at the hands of a mobile phone. Sadly Dai Carpenter had to concede his game against Maurice Hill for this very reason, in a position where he certainly wasn't worse. **Thompson – Vaughan** was a quick draw in a Barry Attack, whilst further down Robert Willoughby agreed a draw in a crushing position against Hui Zhu. **Davies – Morgan** is worth a look for it provides further evidence of the unsoundness of this line of the Tarrasch Defence! Phil Morgan never really had enough compensation for the pawn and eventually lost. Matthew Parry went down quickly to Alan Kenyon, one board lower the other Kenyon was gifted a win in a much worse position...



Smith-Kenyon Board 6

All of a sudden, Black has this one cheap threat. White has to move his bishop out the way to g6 attacking the knight, 46 Bg6 and retain a winning advantage.

White played 46. Bc5 and lost to 46...Rxa3#: The most unlucky of oversights for a player who was leading most of the game.

RD 1		NOTTINGHAMSHIRE 2	1779	v	BEAUTY AND THE BEASTS	1853
1	w	Thompson, Brian	1953	½ - ½	Vaughan, David O	2040
2	b	Morgan, Phil *	1914	0 - 1	Davies, Matthew	1956
3	w	Hill, Maurice J	1802	1 - 0	Carpenter, David J	1983
4	b	Willoughby, Robert H	1754	½ - ½	Zhu, Hui	1802
5	w	Kenyon, Alan *	1706	1 - 0	Parry, Matthew	1794
6	b	Kenyon, Mark A *	1546	1 - 0	Smith, Steve	1542
				4 - 2		

You can find all of the games from this round here:

PGN http://www.4ncl.co.uk/0910_div3-01.pgn

Game viewer http://www.4ncl.co.uk/0910_div3-01viewer.htm

And view results and information about the 4ncl here: <http://www.4ncl.co.uk/>