



# FOUR NATIONS CHESS LEAGUE

Division 3 Round 4 report by Matt Lunn & William Jones (KJCA Kings)

## 3CS vs Warwickshire Select 2 (2.5-3.5)

Page, Mark E (1996) - Bentley, John L (2237) [B25]

**1.e4 c5 2.Nc3 Nc6 3.g3 g6 4.Bg2 Bg7 5.d3 Nf6 6.f4 d6 7.Nf3 0-0 8.0-0 Rb8 9.h3** A typical position in the closed Sicilian has occurred. **9...b5 10.Be3** [10.a3 Here is a famous game between Spassky-Geller in this line where white demonstrates a good kingside onslaught. 10...a5 11.Be3 b4 12.axb4 axb4 13.Ne2 Bb7 14.b3 Ra8 15.Rc1 Ra2 16.g4 Qa8 17.Qe1 Qa6 18.Qf2 Na7 19.f5 Nb5 20.fxc6 hxc6 21.Ng5 Na3 22.Qh4 Rc8 23.Rxf6 exf6 24.Qh7+ Kf8 25.Nxf7 Rxc2 26.Bh6 Rxc1+ 27.Nxc1 Kxf7 28.Qxg7+ Ke8 29.g5 f5 30.Qxg6+ Kd7 31.Qf7+ Kc6 32.exf5+ 1-0 Spassky,B-Geller,E/Sukhumi 1968] **10...b4 11.Ne2 Nd7 12.Rb1 Qa5<sup>3</sup>**



**13.g4 e6** [13...Qxa2 $\mu$  is possible and recommended as the best move. The queen here provides an attack among the weak white queenside pawns. Play could go... 14.b3 Qa5 15.f5 Bb7 16.Qd2 Rbc8 17.Bh6 Nde5 18.Nxe5 Nxe5 19.Rbc1 Nc6 20.Kh2 Nd4] **14.Qe1 d5 15.Qh4 Qd8** [15...Qxa2 is still possible but white's queen is now much better placed and readily poised for an attack.] **16.Qf2 dxe4** [16...d4 17.Bd2 Bb7 18.Ng5 Qa5 19.a3 Qa4 20.b3 Qxa3 21.f5 h6 22.Bc1 Qa6 23.Nf3 g5<sup>3</sup> and it looks like black is containing white's attack for the moment.]

**17.dxe4 Ba6 18.Rfd1 Qc7 19.e5 f6 20.exf6 Bxf6 21.Ng3 Nd4 22.Ne4 Bg7** [22...e5! 23.Nxf6+ Rxf6 24.Nxe5! Nxe5 25.Bxd4 cxd4 26.Qxd4 Nxc4 27.hxc4 Qxf4 28.Qxf4 Rxf4 29.Rd7 Rxg4 30.Kh2 Rf8 31.Bd5+ Kh8 32.Re1=] **23.Nxd4 cxd4 24.Bxd4 e5?** [24...Rxf4 25.Qe3 Bxd4 26.Qxd4 Ne5 27.Qd6 Qxd6 28.Rxd6 Bc4 29.Re1 Rc8=] **25.Bxa7+- Rb7 26.Be3** [26.Rxd7! is a stronger alternative 26...Qxd7 27.Nc5 Qb5 (27...Qf7 28.Rd1!! Rxa7 (28...Kh8 29.Bxb7 Bxb7 30.Rd7+-) ) 28.Nxb7 Bxb7 29.Qb6 Qxb6+ 30.Bxb6 Bxg2 31.Kxg2 Rxf4 32.Ba5 h5 33.gxh5 gxh5 34.b3 Rd4 35.c4 Rd2+ 36.Kf3 Rxa2 37.Bxb4+-] **26...exf4 27.Bd4** [27.Bc5 Rc8 28.Bd4 f3 29.Bxf3 Ne5 30.Bxe5 Bxe5 31.Ng5+-] **27...Bxd4 28.Qxd4 f3 29.Qd5+ Kh8 30.Qd4+** Best to take a draw, as other variations give white a slight plus. **30...Ne5** [30...Qe5] **31.Nd6** [31.Nc5 $\pm$  Rb6 32.Nd7 fxc2 33.Nxb6+-] **31...Qb6** [31...Qg7

32.Bf1 Ra7 33.Qxb4 Bxf1 34.Rxf1 Rxa2] 32.Nxb7 Qxd4+ 33.Rxd4 fxg2 34.Rd8 Nf3+ 35.Kxg2 Ne1+ 36.Kg3 1-0

RD 4		3CS	2126	v	WARWICKSHIRE SELECT 2	2029
1	w	Ashton, Adam G	2319	½ - ½	Ingram, Keith R	2114
2	b	Longson, Alexander	2254	½ - ½	Weaving, Richard	2098
3	w	Jaunooby, Ali Reza	2171	1 - 0	Fallowfield, Jeremy	2048
4	b	Bentley, John L	2237	0 - 1	Page, Mark E	1996
5	w	Burke, Mitchell R	1883	½ - ½	Fallowfield, Nicholas K	2018
6	b	Horton, Jamie A	1890	0 - 1	Goodwin, Ed H	1898
				2½-3½		

### Iceni vs Nottinghamshire 1 (3.0-3.0)

Feavyour,John A (2076) - Coates,David H (2067) [A68]

1.d4 Nf6 2.c4 g6 3.Nc3 Bg7 4.e4 d6 5.f4 0-0 6.Nf3 c5 7.d5 e6 8.Be2 exd5 9.cxd5 Bg4 10.0-0 Re8 11.h3 Bxf3 12.Bxf3 a6 13.a4 Nbd7 14.Qc2 c4 15.Be3 Qa5



[15...Rc8 is the other alternative, to play Qa5 later and Qb4 are possible plans, with Nc5. 16.Rae1 Qc7 17.Kh1 Qb8 18.Bg1 Nc5 19.Bh2 Nfd7 20.Bg4 Re7 21.e5 dxe5 22.Bxd7 Nxd7 23.f5 Nf6 24.Ne4 Nxe4 25.Rxe4 Qd6 26.Rxc4 Rxc4 27.Qxc4 Rc7 28.Qg4 gxf5 29.Qxf5 Qxd5 30.Qf2 h6 31.Bg3 Rc6 32.Kh2 Rf6 33.Qe2 Rxf1 34.Qxf1 e4 35.Qe2 Qd3 36.Qg4 Qd5 37.Bf4 Kh7 38.b4 Bf8 39.h4 Bxb4 40.Kh1 Bc5 41.Bc1 Bd4 42.Qd1 Qc4 43.Bf4 Bg7 44.Kh2 b5 45.axb5 axb5 46.Qh5 b4 47.Qf5+ Kg8 48.Qg4 Qe6 49.Qg3 b3 50.Bc1 Kh7 51.Qf2 Qe5+ 52.Kh3 h5 53.Qxf7 Qc3+ 54.Kh2 Qxc1 55.Qf5+ Kh8 56.Qxh5+ Qh6 0-1 Djukic,Z (2410)-Ivanovic,B (2520)/Cetinje 1990/EXT 1997]

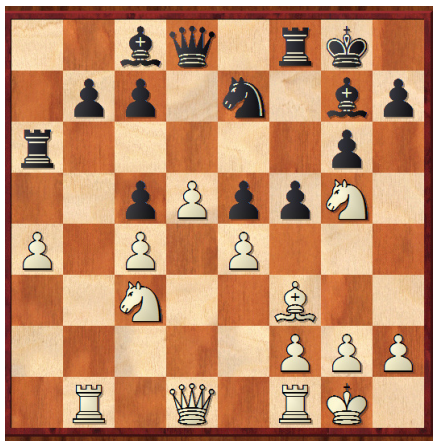
**16.Qf2** [16.g4 White gets thrashed if you hack too early, as shown in this game! 16...Nc5 17.g5 Nfd7 18.Ne2 Nd3 19.Nd4 Nxf4 20.Bg4 Nxd5 21.Qf2 Nxe3 22.Qxf7+ Kh8 23.Nf5 gxf5 24.exf5 Nxg4 25.hxg4 Qc5+ 26.Rf2 Ne5 27.Qh5 Nd3 0-1 Van der Plas,R (2217)-Valdes,L (2407)/Seville 2003/CBM 092 ext] **16...Rac8 17.Rae1 Qb4 18.g4 Nc5 19.Bxc5 Qxc5 20.Qxc5 Rxc5 21.e5±** White has got exactly what he wants, with a strong central attack that white can get in a 4 Pawn KID. **21...dxe5 22.fxe5 Nd7 23.e6 fxe6 24.dxe6 Ne5 25.Bxb7 Rxe6 26.Kg2 Rb6 27.Bd5+ Kh8 28.Re2 Rc8 29.Rfe1 Rcb8??** [29...Rxb2 Black misses this chance to have a level ending. 30.Rxb2 Nd3 31.Rbe2 Nxe1+ 32.Rxe1 Bxc3 33.Rc1 Bd2 34.Rxc4 Rxc4 35.Bxc4 a5 Can't get any more level really!; 29...Rf8 also possible. 30.Rxe5 Rxb2+ 31.Kg1 Rc2! 32.R5e4 Rxc3 33.Bxc4 a5 34.Kg2 h6=] **30.Rxe5 Rxb2+ 31.Kg3 Bxe5+ 32.Rxe5+- g5 33.Nd1 R8b3+ 34.Ne3 Re2 35.Kf3 Rc2 36.Rxg5 h6 37.Rg8+ Kh7 38.Re8 Rcc3 39.Kf4** The 2 pieces v.s. Rook are way too strong. **39...Ra3 40.Bg8+ Kg6 41.h4 Rxe3 1-0**

RD 4		ICENI	2052	v	NOTTINGHAMSHIRE 1	2086
1	w	Savage, Nicholas W	2058	½ - ½	Barnes, Michael H	2247
2	b	Calvert, D Ian	2069	0 - 1	Richmond, Robert J	2200
3	w	Feavyour, John A	2076	1 - 0	Coates, David H	2067
4	b	Ruthen, Stephen W	2093	0 - 1	Levens, David G	1986
5	w	Botham, C Paul	2040	½ - ½	Truman, Richard G	2015
6	b	Donaghay, Richard H	1975	1 - 0	Kingston, Ian	1999
				3 - 3		

## KJCA Kings vs Sambuca Black Sheep (3.5-2.5)

Lunn,Matthew (1905) - Lutton,J Ezra (2098) [E97]

1.d4 Nf6 2.c4 g6 3.Nc3 Bg7 4.e4 d6 5.Nf3 0-0 6.Be2 e5 7.0-0 Nc6 8.d5 Ne7 9.b4 a5  
10.Ba3 axb4 11.Bxb4 Nd7 12.a4 f5 13.Ng5 Nc5 14.Bxc5 dxc5 15.Bf3 Ra6 16.Rb1



So close to getting a position from Kramnik-Kasparov. [16.a5 Kh8 17.Ne6 Bxe6 18.dxe6 f4 19.Qxd8 Rxd8 20.Rfb1 Rb8 21.Nd5 Nxd5 22.cxd5 Bf8 23.Be2 Ra7 24.a6 Bd6 25.h4 Kg7 26.Bc4 b6 27.Bb5 h6 28.Kf1 Rf8 29.Ke2 Rf6 30.Rb3 Kf8 31.Rh3 Ke7 32.Kd3 Kf8 33.Kc4 Kg7 34.Bc6 Kf8 35.Kb5 Kg7 36.Bb7 Kf8 37.Rg1 Ke7 38.g3 f3 39.Rc1 Kd8 40.Rc3 h5 41.Rh1 Ke7 42.Rd1 1-0 Kramnik,V (2780)-Kasparov,G (2815)/Moscow 1998/CBM 067 ext]

16...Kh8 17.Qe2? [17.Ne6<sup>2</sup> Bxe6 18.dxe6 And now the b7 pawn is left a bit weaker and white can take control of the all important d5 square. 18...Rd6 19.Qb3 b6 (19...Rb6 20.Qa3±) 20.Rfd1 Nc6 21.Rxd6 Qxd6 22.exf5 Nd4 (22...gxf5 23.Nb5 Qxe6 24.Nxc7 Qh6 25.Bxc6 Qxc6 26.Nd5 e4 27.Qb5 Qg6 28.Qxb6 Bd4 29.Qxg6 hxg6 30.a5±) 23.Nb5! Qe7 24.Nxd4 exd4 25.fxg6 Qxe6 26.gxh7 Kxh7 27.Qd3+ Kh8 28.Be4±]

17...Nxd5 18.Nxd5 Qxg5 19.Nxc7 Rxa4 20.Nd5 Ra3 21.Ra1 Rxa1 22.Rxa1 Be6 23.Qe3 Qxe3 24.Nxe3 Rb8 [24...f4 25.Nd5 b5 26.Ra6 Bxd5 27.exd5 bxc4 28.Rc6 Ra8 29.h4 e4 30.Bxe4 Bd4µ] 25.Rb1 b6 26.exf5 gxf5 27.Bc6 Rd8 28.Nd5 Bxd5 29.Bxd5<sup>3</sup> It is much more difficult for black now. With opposite bishops and no seriously threatening pawn breaks, it looks like it could burrow down to a draw...

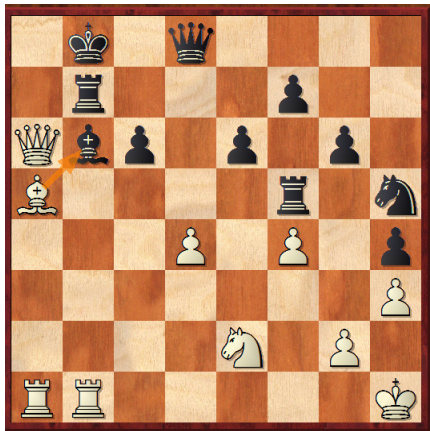
29...Rd6 30.Kf1 Bh6 31.Ke2 Rg6 32.g3 Bg5 33.Rb2 Bd8 34.Ra2 Rd6 35.Rb2 Kg7 36.Kf3 Rh6 37.h4 Rd6 38.Rb3 Rd7 39.Be6 Rd4 40.Bd5 Kf6 41.Ra3 b5? [41...e4+ 42.Ke3 Ke5µ and black can keep playing...] 42.Ra6+ Kg7 43.Ra7+ Kf6 44.Ra6+ [44.Rf7+ is possible, but white was after a draw anyway. No need to complicate matters... 44...Kg6 45.Rd7 bxc4 46.Rxd8 c3 47.Rg8+ Kf6 48.Bb3 e4+ 49.Ke2 Rd2+ 50.Ke1 Rb2 51.Ba4 it is level!! But much harder now, isn't it?!!!] 44...Kg7 45.Ra7+ ½-½

RD 4		KJCA KINGS	1931	v	SAMBUCA BLACK SHEEP	2070
1	w	Jones, William EG	2084	½ - ½	Edgell, Ben P	2100
2	b	Jones, Victor GL	2062	1 - 0	Cairns, Stephen *	2106
3	w	Lunn, Matthew	1905	½ - ½	Lutton, J Ezra	2098
4	b	Bayliss, Lyall CP	1960	½ - ½	Makepeace, Philip J	2042
5	w	Maguire, Robert	1825	1 - 0	Healey, Michael W	2016
6	b	Jones, Laurence AG	1747	0 - 1	Harley-Yeo, Gareth	2059
				3½-2½		

## The Full Ponty vs Wessex 2 (2.5-3.5)

Gilbert,Jonathan A (2058) - Tunks,Dominic (2076) [B07]

1.e4 d6 2.d4 Nf6 3.Nc3 c6 4.f4 Bg4 5.Nf3 Qb6 6.Be2 e6 7.h3 Bxf3 8.Bxf3 d5 9.0-0 Be7  
 10.Kh1 g6 11.Qd3 h5 12.Ne2 Nbd7 13.a4 a5 14.b3 dxe4 15.Bxe4 Nxe4 16.Qxe4 0-0-0  
 17.Bd2 Nf6 18.Qf3 h4 19.Rfb1 Rh5 20.c3 Rf5 21.Qd3 Rd7 22.b4 axb4 23.cxb4 Nh5 24.b5  
 Kb8 25.a5 Qc7 26.b6 Qd8 27.a6 Bc5 28.axb7 Rxb7 29.Qa6 Bxb6 30.Ba5

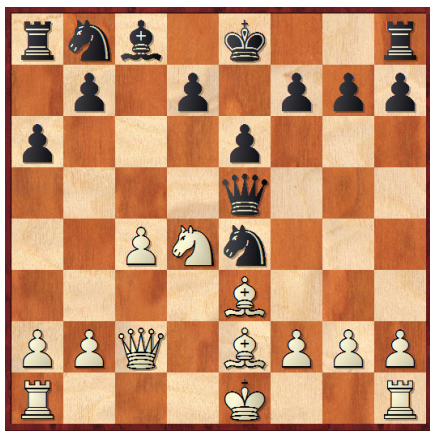


White has a huge position and created a nice finish due to a final error from black...

[30.Be3 Nf6 31.d5 Nxd5 32.Nd4 Kc7 33.Nxf5 gxf5 34.Bd4+-] **30...Rb5 31.Rxb5 cxb5 32.Bxb6 Qxb6 33.Qa8+ Kc7 34.Rc1+ Kd6 35.Qf8+ Kd5??**  
 [35...Re7 36.Rc8 Kd7 37.Nc3 Nf6 38.Nxb5 Ne8 39.Rc5 It looks nasty for black, but he is still fighting...] **36.Nc3+ Kxd4 37.Qb4+ Kd3 38.Qe4+ 1-0**

Taylor-Bowd,Philip J (2043) - Adams,Mark A (2026) [B41]

1.e4 c5 2.Nf3 a6 3.c4 e6 4.Nc3 Qc7 5.d4 cxd4 6.Nxd4 Nf6 7.Be2 Bb4 8.Qc2 Qe5 9.Be3  
 Bxc3+ 10.Qxc3 Nxe4 11.Qc2



[11.Qa3!± Qc5 (11...Qd6 12.Qxd6 Nxd6 13.0-0-0 Ne4 14.f3 Nf6 15.g4 d5 16.g5 Ng8 17.cxd5 exd5 18.h4?) 12.Qxc5 Nxc5 13.Nf5 exf5 14.Bxc5 of course white is a pawn down, but white's superior control of the dark squares show there is plenty of compensation.] **11...Qa5+ 12.Kf1 f5 13.a3 0-0<sup>3</sup> 14.b4 Qd8 15.Rd1 Qe8** [15...d5 should be played, black needs to gain space due to his lack of development. 16.cxd5] **16.Nb3 Qg6 17.Nc5 Nxc5?** just allows white's bishop in. **18.Bxc5<sup>2</sup> Re8 19.Bf3 Nc6 20.Qe2 Qf6 21.g3 Nd8**

[21...b5!= 22.Kg2 bxc4 23.Rd6 Rb8 24.Bxc6 (24.Qxc4?? Ne5 25.Qc1 Nxf3) 24...dxc6 25.Qxc4]

22.Kg2 Nf7 23.Bd6 Ng5 24.Be5± Qe7 25.Bd6 Qf6 26.Be5 Qe7 27.Bd6 [27.c5 must be the correct move, solidifying control on those all important dark squares. 27...Nxf3 28.Qxf3 a5 29.Bd6 Qf6 30.b5+-] 27...Qf6 28.Be5 ½-½

RD 4		THE FULL PONTY	2016	v	WESSEX 2	2076
1	w	Gilbert, Jonathan A	2058	1 - 0	Tunks, Dominic	2076
2	b	Sully, David J	2119	0 - 1	Jenks, Bruce	2127
3	w	Miles, Richard	2074	½ - ½	Pleasants, Allan J	2079
4	b	Adams, Mark A	2026	½ - ½	Taylor-Bowd, Philip J	2043
5	w	Dixon, Chris	1953	½ - ½	Clark, Ian C	2072
6	b	Gilbert, Colin	1864	0 - 1	Gregory, Keith DF	2056
				2½-3½		

### Braille Chess Association vs Gloucestershire Gambits (3.5-2.5)

Crouch, Colin S (2346) - Hosken, Nigel K (2109) [D30]

4NCL/Div3/BCA vs. GLOSG Hinckley Island ENG (4.1), 17.01.2010

1.d4 d5 2.c4 c6 3.Nf3 Nf6 4.Nbd2 e6 5.e3 Nbd7 6.Bd3 Bd6 7.0-0 0-0 8.e4 e5



[8...dxe4 9.Nxe4 Nxe4 10.Bxe4 Nf6 11.Bc2 b6 12.Qd3 h6 13.b3 Qe7 14.Bb2 Rd8 15.Rad1 Bb7 16.Rfe1 Rac8 17.Nh4 Bb8 18.g3 Kf8 19.Qf3 Kg8 20.Nf5 Qc7 21.Nxh6+ Kf8 22.d5 cxd5 23.Bxf6 gxf6 24.Qxf6 Ke8 25.Rxe6+ fxe6 26.Qxe6+ Kf8 27.Qf6+ 1-0 Capablanca,J-Scott,R/Hastings 1919; 8...Re8] **9.cxd5 exd4** Out of 252 games there has been 1 outing with 9 exd4!! All the other moves have been 251/252 the simple recapture on d5. [9...cxd5]

**10.Nc4 Bc5 11.dxc6 bxc6 12.e5** [12.Bg5 This is the 1/252 games in Big Database 2009. 12...h6 13.Bh4 g5 14.Bg3 Re8 15.Nfd2 Nb6 16.e5 Nfd5 17.Ne4 Be7 18.Ncd6 Bxd6 19.Nxd6 Re6 20.Qf3 Rxd6 21.exd6 Be6 22.Qe4 Qf6 23.Be5 Qg6 24.Qxg6+ fxg6 25.Rfe1 Kf7 26.Bxd4 Nf4 27.Be4 Rd8 28.Rad1 Nbd5 29.g3 Nh3+ 30.Kg2 Rxd6 31.Bc5 Rd7 32.Bxg6+ Kxg6 33.Rxe6+ Kf5 34.Rd6 Rxd6 35.Bxd6 g4 36.Bc5 a6 37.f4 Ke4 38.Rd4+ Kf5 39.Ra4 Ndx4+ 40.gxf4 Nxf4+ 41.Kg3 1-0 Savchenko,S (2495)-Debray,T (2118)/France 2006/EXT 2006]

**12...Nd5 13.Ng5 h6 14.Qh5² Be7 15.Nxf7 Rxf7 16.e6 Rf6 17.exd7 Bxd7 18.Ne5 Be8** [18...Bd6= 19.Ng4 Bxg4 20.Qxg4 Qc7 21.g3 Bc5 22.Bd2 Qb6 23.b3 Bb4²] **19.Qg4± c5?? 20.Qe4 Kf8 21.Bd2** [21.Qh7 Why not straight away? 21...Bd6 22.Qh8+ Ke7 23.Qxg7+ Ke6 (23...Bf7 24.Nc6+) 24.Qg8+ Ke7 25.Qxd5]

**21...Rb8** [21...Qd6 22.Rae1 Rd8 23.Qh7 Qe6 24.Bc4 Qg8 25.Qe4+- and Black is in a mess.] **22.Rae1 Rxb2** [22...Qd6 23.Qh7 Qe6 24.Bc4 Rd8 25.Nf3 Qf7 26.Qh8+ Qg8 27.Qxg8+ Kxg8 28.Bxd5+ Rxd5 29.Rxe7+-] **23.Qh7** Still the same effect. **23...Bf7 24.Qh8+ Bg8 25.Bh7 1-0**

RD 4		BRAILLE CHESS ASSOCIATION	2074	v	GLOUCESTERSHIRE GAMBITS	1945
1	w	Crouch, Colin S	2346	1 - 0	Hosken, Nigel K	2109
2	b	Mordue, A Tyson	2286	½ - ½	Waterfield, John W	1988
3	w	Ross, Chris N	2207	½ - ½	Taylor, Geoffrey P	1962
4	b	Armstrong, William G	1966	½ - ½	Meade, Philip J	1960
5	w	Burnell, Steve	1898	½ - ½	Dodwell, Phil	1978
6	b	Andrews, Norman G	1738	½ - ½	Blencowe, Ian P	1674
				3½-2½		

## AMCA Rhinos vs Nottinghamshire 2 (1.5-4.5)

Combie,Alexander (1945) - Sparkes,Daniel A (2066) [A57]

1.d4 Nf6 2.c4 c5 3.d5 b5 4.cxb5 a6 5.e3 g6 6.Nc3 d6 7.bxa6 Bxa6 8.Bxa6 Nxa6 9.f4N An interesting novelty. Normally white has a strong centre with d5, e4 (f4) but here it is an e3, f4 set-up, which worked out well for white in the opening! 9...Qa5 10.Nf3 Ne4 11.Bd2 Nxd2 12.Qxd2 Bg7 13.e4 0-0 14.0-0+-



White's opening strategy has worked pretty well. No weaknesses and about to shut out that g7-bishop... 14...Ra7 15.e5 Rb8 16.b3 Nc7 17.Qd3 Rb4 18.g3 Qb6 19.Kh1 Qb7 20.Rfd1 Nb5 21.Nxb5 Rxb5 22.Re1 Ra8 23.Re3 dxe5 24.fxe5 Rd8 25.Rd1 Rb4 26.Kg2 Bh6 27.Re2 e6 28.d6 White has built up carefully and developed his advantage considerably. 28...Rd4 29.Qc2 Qd5 30.Rxd4 cxd4 31.Qe4 Be3 32.Qxd5 exd5 33.Re1 [33.a4 Rb8 34.b4! Rxb4? 35.d7 Rb8 36.Rc2]

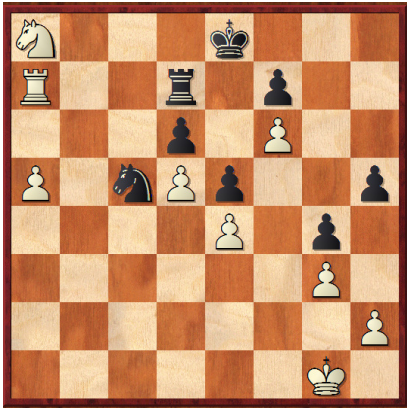
33...f6 34.e6! Rxd6 35.Nxd4! Kf8 36.Rxe3 Ke7 37.b4 Rb6 38.b5 1-0

RD 4		AMCA RHINOS	2046	v	NOTTINGHAMSHIRE 2	1950
1	w	Duvall, Ian (def)	2062	0 - 1	Flynn, David	2053
2	b	Sparkes, Daniel A	2066	0 - 1	Combie, Alexander	1945
3	w	Tart, Peter K	2078	0 - 1	Webster, Richard J	1969
4	b	Stayt, James N	1996	½ - ½	Burke, Steven J	1954
5	w	McLaughlin, Noel S	2022	½ - ½	Taylor, Robert P	1978
6	b	Stille, Alexander M	2054	½ - ½	Hill, Maurice J	1802
				1½-4½		

## Hackney vs FCA Solutions 2 (2.0-4.0)

Reid, John (2266) - Fraser-Mitchell, Jeremy N (2002) [A56]

1.d4 Nf6 2.c4 c5 3.d5 e5 4.Nc3 d6 5.e4 Be7 6.g3 0-0 7.Bg2 Nbd7 8.Nge2 Ne8 9.0-0 g6 10.Bh6 Ng7 11.f4 Rb8 12.f5 a6 13.a4 Bg5 14.Bxg5 Qxg5 15.Qd3 Nf6 16.Bh3 Nge8 17.Qf3 h5 18.Rad1 Qh6 19.Rf2 g5 20.Bf1 Kg7 21.Rb1 Rh8 22.b4 cxb4 23.Rxb4 Nd7 24.Nc1 g4 25.Qd1 Nef6 26.Nd3 Qe3 27.Qd2 Qxd2 28.Rxd2 b6 29.a5 b5 30.Rdb2 bxc4 31.Rxb8 Nxb8 32.Rxb8 cxd3 33.Bxd3 Nd7 34.Rb4 Kf6 35.Na4 Ke7 36.Rc4 Kd8 37.Rc6 Ke7 38.Bxa6 Bxa6 39.Rxa6 Rb8 40.Ra7 Ke8 41.Ra6 Ke7 42.Nb6 Nc5 43.Ra7+ Ke8 44.f6 Rd8 45.Na8 Rd7



White was never worse throughout this game, holding a small advantage throughout. He is a pawn up, but it is a bit difficult to convert this to a full point. **46.Rxd7** [46.Nc7+ Kd8 47.Ne6+!! very hard to spot. 47...fxe6 48.Ra8+! Kc7 49.f7! Rxf7 50.Ra7+ Nb7 51.a6 Kb6 52.dxe6 Rf6 53.Rxb7+ Kxa6 54.Re7 Kb6 55.Re8 Kc7 56.Kg2 Rg6 57.h3 Rf6 58.h4 Kb7 59.Rh8 Rxe6 60.Rxh5 Kc6 61.Rg5 d5 62.Rxg4 dxe4 63.Rxe4 Kd5 64.Re2+-]

**46...Kxd7 47.Nb6+ Kc7 48.Kf2 Nxe4+μ** Tables have turned in 2 moves, and now for the first time black has the advantage, and it proves to be decisive. **49.Ke3 Nxf6 50.Kd3 Nd7 51.Nc4 Nc5+ 52.Kc3 f5 53.Kd2 f4 54.gxf4 exf4 55.Ke2 Ne4 56.Kf1 h4 57.Kg2 f3+ 58.Kf1 g3 59.hxg3 hxg3 60.Kg1 Nc3 0-1**

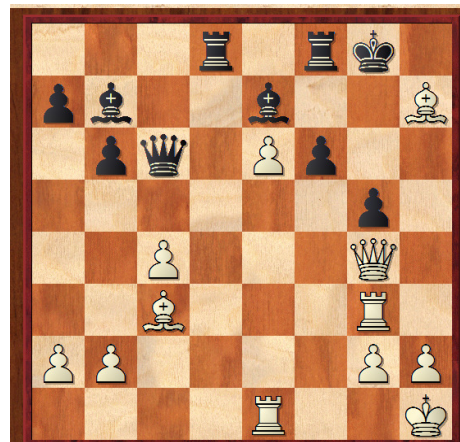
RD 4		HACKNEY	2051	v	FCA SOLUTIONS 2	1991
1	w	Reid, John	2266	0 - 1	Fraser-Mitchell, Jeremy N	2002
2	b	Chin, Francis CW	2223	½ - ½	Freeman, Richard CP	2061
3	w	Ociepka, Adrian	2127	½ - ½	Valentine, Brian J	1983
4	b	Walker, Nicholas P	2010	½ - ½	Elwin, Adrian G	2013
5	w	Shaw, Dashiell L	1910	½ - ½	Matthews, Adrian MS	1936
6	b	Rigby Zeghlache, Elyes R	1770	0 - 1	Adebajo, Olufemi	1952
				2 - 4		

## Rhyfelwyr Essyllwg vs SCS (6.0-0.0)

Kett, Timothy J (2238) - Clarke, Sean A (1786) [C10]

1.e4 e6 2.d4 d5 3.Nc3 dxe4 4.Nxe4 Be7 5.Nf3 Nf6 6.Bd3 Nbd7 7.0-0 Nxe4 8.Bxe4 Nf6 9.Bd3 0-0 10.Ne5 c5 11.dxc5 Bxc5 12.Bg5 Be7 13.Qe2 Nd5 14.Bd2 Qc7 15.Rad1 Bd6 16.f4 b6 17.c4 Bc5+ 18.Kh1 Nf6 19.Bc3 Bb7 20.f5 Rae8 White has had the advantage the whole way through and finishes nicely in 6 moves...

21.Ng4+- Nxg4 22.Qxg4 f6 23.fxe6 Qc6 24.Rde1 Be7 25.Rf3 Rd8 26.Rg3 g5 27.Bxh7+! 1-0



**Brown, Tom (2051) - Fonseca, Antonio JS (1786) [D38]**

**1.d4 d5 2.c4 e6 3.Nc3 Nf6 4.Nf3 Bb4 5.Bg5 0-0 6.a3 Bxc3+ 7.bxc3 dxc4 8.e4+-** A clear opening advantage to white.

**8...h6 9.Bxf6 Qxf6 10.Bxc4 c5 11.0-0 Nc6 12.e5 Qe7 13.Qe2 a6 14.Qe4 g6 15.Qe3 Kg7 [15...cxd4 16.Qxh6 dxc3 17.Ng5 f6 18.Qxg6+ Qg7 19.Bxe6+ Bxe6 20.Qxg7+ Kxg7 21.Nxe6+ Kg6 22.Nxf8+ Rxf8 23.Rac1 Nd4 24.Rfe1 c2 25.e6+-]**

**16.dxc5 Bd7 17.Rad1 Rfc8 18.Rd6 Na5 19.Ba2 Bc6 20.Rfd1 Bxf3 21.Qxf3 Rxc5 22.Rd7 Qe8 23.Qf6+ Kg8 24.Bxe6** A swift finish! **1-0**

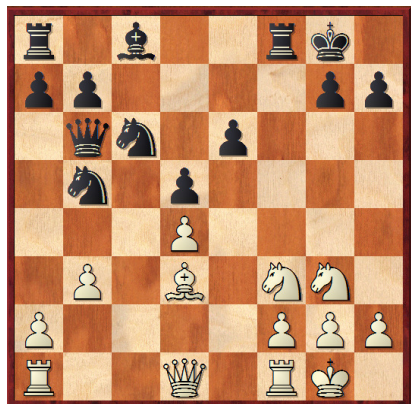


RD		RHYFELWYR ESSYLLWG	2197	v	SCS	1811
1	w	Williams, Leighton	2400	1 - 0	Bogoda, Sagara T	1874
2	b	Jones, Richard S	2321	1 - 0	Gedvilas, Arunas *	1938
3	w	Kett, Timothy J	2238	1 - 0	Clarke, Sean A	1786
4	b	Morris, Gareth L	2147	1 - 0	Lutton, J Arnold	1823
5	w	Brown, Tom	2051	1 - 0	Fonseca, Antonio JS	1786
6	b	Smith, Olivia (F)	2026	1 - 0	Bogoda, Nathasha O (F)	1658
				6 - 0		

**E2E4.org.uk 2 va Guernsey Mates (4.5-1.5)**

**Kirby, Peter J (2067) - Foster, James M (1876) [C06]**

**1.e4 e6 2.d4 d5 3.Nd2 Nf6 4.e5 Nfd7 5.Bd3 c5 6.c3 Nc6 7.Ne2 Qb6 8.Nf3 cxd4 9.cxd4 f6 10.exf6 Nxf6 11.0-0 Bd6 12.b3 0-0 13.Bf4 Bxf4 14.Nxf4 Ne4 15.Ne2 Nd6 16.Ng3 Nb5** We have reached this position with white to play between Kirby-Foster, Board 4. [16...Nf5 17.Nxf5 exf5 18.Bc2=]



**17.Bxh7+!² Kxh7 18.Ng5+ Kg6 19.Qh5+ Kf6 20.Nh7+ Ke7 21.Nxf8 Kxf8 22.Qh8+ [22.Rfd1 much better, getting a rook potentially in via d3 then to f3. 22...Nbx4 23.Qh8+ Kf7 24.Nh5 Kg6 25.Qxg7+ Kxh5 26.Rd3+-] 22...Kf7 23.Nh5 Qxd4 24.Rad1 Qg4 25.Rd3 Ncd4 26.Re1 Qg6 27.Nf4 Qh6 28.Qxh6 gxh6 29.a4 Nc2 30.Rc1 Nbd4³** All of a sudden, black is doing much better. **31.Rc3 e5** [31...Ke7 Black has to stop white coming to c7, as shown in the game. 32.R3xc2 Nxc2 33.Rxc2 Kd6³]

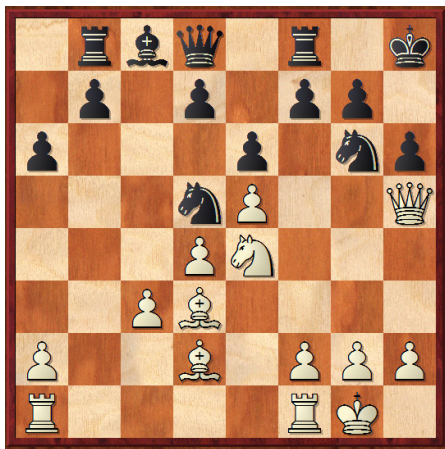
**32.Rc7+ Kg8 33.R1xc2 Nxc2 34.Nxd5 Be6 35.Nf6+ Kf8 36.Rxc2 Bxb3 37.Rc7 Bxa4 38.Rxb7=** It is a level position. **38...a5 39.Ng4 Bd1 40.Nxe5 a4 41.Nd7+ Ke8 42.Nf6+ Kf8 43.Nd7+** And the arabian knight secures white the draw, even though at move 17, white was looking for a bit more! **½-½**

RD 4		E2E4.ORG.UK 2	1923	v	GUERNSEY MATES	1955
1	w	Jones, Christopher M	1964	1 - 0	Thurlow, Kevin J	2070
2	b	Gibson, Christopher A	1970	½ - ½	Rowe, Peter	2039
3	w	Wilke, Chris	1933	½ - ½	Wojciechawski, Paul	2101
4	b	Foster, James M	1876	½ - ½	Kirby, Peter J	2067
5	w	Jaszkowskyj, Peter	1941	1 - 0	Brookfield, Toby N	1779
6	b	Turvey, Steven	1856	1 - 0	O'Connor, Jonathan T	1675
				4½-1½		

## Oxford 2 vs Bristol 2 (1.5-4.5)

Ponter,Ian P (2046) - Jackson,Gary C (2034) [B22]

1.e4 c5 2.c3 Nf6 3.e5 Nd5 4.d4 cxd4 5.cxd4 Nc6 6.Nf3 e6 7.Nc3 Bb4 8.Bd2 Nce7 9.Bd3 a6 10.0-0 Rb8 11.Ng5 h6 12.Nge4 0-0 13.Qg4 Kh8 14.Qh5 Bxc3 15.bxc3 Ng6



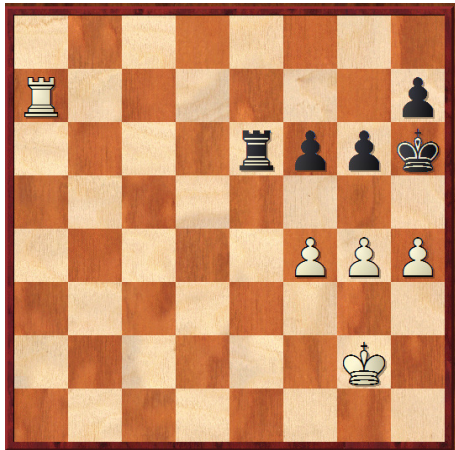
White has an ideal position from a c3 sicilian. He is on the attack with black having a completely passive position. 16.Nd6 [16.Bxh6! Qh4 (16...gxh6 17.Qxh6+ Kg8 18.Ng5±) 17.Qxh4 Nxh4 18.Bg5 Ng6 19.Bc4 b5 20.Bxd5 exd5 21.Nd6+-] 16...Nde7 17.h4 Kg8 18.Qg4 Nf5 19.Bxf5 exf5 20.Nxf5 d6 21.h5 Bxf5 22.Qxf5 Ne7 23.Qg4 Kh8 24.exd6 Nd5 25.Qg3 Nf6 26.Qf3 Qa5 27.Rfd1 Qb6 28.Bxh6 Nd7 29.Bf4 Qa5 30.c4 Rbe8 31.c5 Nf6 32.Be5+- And white won on move 50. 32...Nd7 33.Bxg7+ Kxg7 34.Qg4+ Kf6 35.Qxd7 Re2 36.Qxb7 Qc3 37.Qf3+ Qxf3 38.gxf3 Rh8 39.Kf1 Rb2 40.d7 Ke7 41.Re1+ Kd8 42.Re8+ Rxe8 43.dxe8Q+ Kxe8 44.Re1+ Kd7 45.h6 Rb8 46.Re4 Rh8 47.Rh4 Kc6 48.h7 a5 49.Rh6+ Kc7 50.d5 1-0

RD 4		OXFORD 2	2023	v	BRISTOL 2	2001
1	w	Stembridge, Ed	2066	0 - 1	Humphreys, Jerry G	2082
2	b	Jackson, Gary C	2034	0 - 1	Ponter, Ian P	2046
3	w	Scott, David A	2058	0 - 1	Schofield, Oliver	1962
4	b	Rawlinson, Christopher JA	2048	½ - ½	Stewart, Joseph	1994
5	w	Ludbrook, Matthew	2011	½ - ½	Hardy, Roger	1999
6	b	Neatherway, A Philip	1922	½ - ½	Bromilow, Edward T	1922
				1½-4½		

## Sussex Smart Controls vs KJCA Knights (5.0-1.0)

Paul,Barnaby J (1610) - Burch,Jonathan G (1770) [A34]

1.c4 Nf6 2.Nc3 g6 3.g3 Bg7 4.Bg2 c5 5.e3 d6 6.Nge2 0-0 7.0-0 Qc7 8.Nf4 e6 9.Nb5 Qb6 10.d4 e5 11.dxe5 dxe5 12.Nd5 Nxd5 13.Bxd5 Rd8 14.a4 Nc6 15.Bd2 Ne7 16.a5 Qf6 17.Bg2 Nf5 18.a6 Rd7 19.Qc2 Nd6 20.Rfd1 Nxb5 21.cxb5 Qe7 22.Rac1 Rb8 23.axb7 Bxb7 24.Qxc5 Bxg2 25.Kxg2 Qxc5 26.Rxc5 Rdb7 27.Bb4 Bf8 28.Rc4 Bxb4 29.Rxb4 Rxb5 30.Rd8+ Rxd8 31.Rxb5 f6 32.Rb7 Rd2 33.b4 Rb2 34.b5 Ra2 35.Rb8+ Kg7 36.Ra8 Ra5 37.Kf3 Rxb5 38.Rxa7+ Kh6 39.g4 Rb4 40.h4 Rb6 41.Kg3 Re6 42.f4 exf4+ 43.exf4 Re3+ 44.Kg2 Re6??



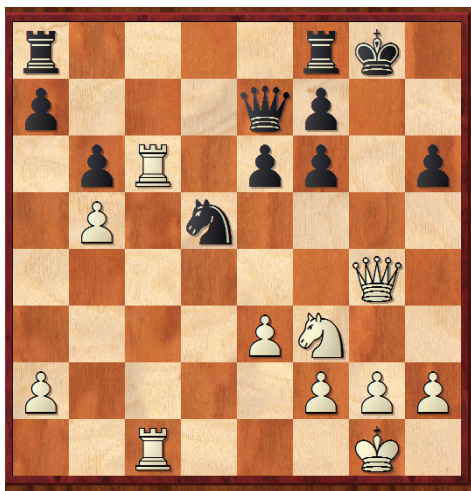
[44...f5= and black is one move away from a draw.] **45.Kf3??** [45.g5+ fxg5 46.hxg5+ Kh5 47.Kf3 and mate is inevitable.] **45...Re1??** [45...g5= equal once again.] **46.g5+ fxg5 47.fxg5+ Kh5 48.Rxh7#** very unfortunate for black. 1-0

RD 4		SUSSEX SMART CONTROLS	1993	v	KJCA KNIGHTS	1754
1	w	Oates, David R	2159	1 - 0	Clanchy, Nicholas	1858
2	b	Grant, David J	2020	1 - 0	Murphy, Conor	1794
3	w	Jones, Chris	2070	1 - 0	Kalid, Raphael	1786
4	b	Michaud, Gerald	2066	1 - 0	Reddiar, Gautham	1746
5	w	Payne, Matthew J	1871	1 - 0	Davis, Alexei	1730
6	b	Burch, Jonathan G	1770	0 - 1	Paul, Barnaby J	1610
				5 - 1		

### Celtic Tigers 2 vs E2E4.org.uk 3 (4.5-1.5)

Homer,Neil S (1754) - Kitchen,Peter J (1930) [D55]

1.Nf3 d5 2.d4 Nf6 3.c4 e6 4.Nc3 Be7 5.Bg5 h6 6.Bxf6 Bxf6 7.e3 0-0 8.Bd3 dxc4 9.Bxc4 b6 10.0-0 Bb7 11.Be2 Nd7 12.Rc1 c5 13.dxc5 Nxc5 14.b4 Na6 15.Qa4 Qe8 16.Bb5 Qc8 17.Ne4 Nc7 18.Nxf6+ gxf6 19.Bc6 Bxc6 20.Rxc6 White has played the opening pretty well and is now in control. Black has no play for his distorted structure. 20...Qe8 21.b5 Nd5 22.Rfc1 Qe7 23.Qg4+-



**Kh7 24.Nd4** [24.e4 Nb4 25.Rc7 Qe8 26.Nd4 Rg8 27.Qf3 Rg7 28.Qxf6+-] **24...Rg8 25.Qf3 Rg6 26.e4 Rag8 27.exd5 Rxc2+ 28.Qxc2 Rxc2+ 29.Kxc2 exd5 30.Nf3** White should be more than happy with the outcome with 2 rooks vs Queen but also an additional knight. **30...Kg7 31.Rc7 Qe4 32.h3 Qg6+ 33.Kh2 Qf5 34.Rg1+ Kf8 35.Rxa7??** [35.Rg3 d4 36.Rxa7 d3 37.a4±] **35...Qxf3μ** This throws away white's advantage he had throughout the game, very unfortunate...

36.Ra8+ Ke7 37.Re1+ Kd6 38.Rd8+ Kc7 39.Rde8 Qxf2+ 40.Kh1 Qf3+ 41.Kg1 Qg3+ 42.Kf1 Qxh3+ 43.Kf2 Qh2+ 44.Kf3 Qxa2μ

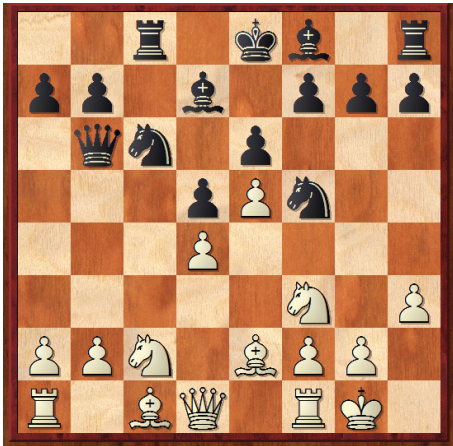
It's all over now, and black converted on move 66. **45.Rc1+ Kd7 46.Rec8 Qb3+ 47.Kf4 Qxb5 48.Kf5 d4+ 49.Kxf6 d3 50.R8c7+ Kd6 51.Rc8 Qb2+ 52.Kxf7 d2 53.Rd8+ Ke5 54.Re8+ Kd4 55.Rd8+ Ke3 56.Rh1 Qc1 57.Rh3+ Ke2 58.Rh2+ Kd1 59.Rh1+ Kc2 60.Rh2 Qf1+ 61.Ke8 Qe1+ 62.Kf7 Kc1 63.Rc8+ Kb1 64.Rxh6 Qf2+ 65.Rf6 Qxf6+ 66.Kxf6 d1Q 0-1**

RD 4		CELTIC TIGERS 2	1940	v	E2E4.ORG.UK 3	1784
1	w	Thomas, Mark	2049	1 - 0	Farrall, David J	1852
2	b	Evans, Craig	2029	1 - 0	Mapletoft, Alexander J	1862
3	w	Fathallah, Joe	1951	0 - 1	Van Der Westhuizen, Charles V	1824
4	b	Kitchen, Peter J	1930	1 - 0	Homer, Neil S	1754
5	w	Ryan, John	1920	½ - ½	Foster, Chantelle L (F)	1682
6	b	Buttall, David	1761	1 - 0	Dean, Michael	1730
				4½-1½		

### Beauty and the Beasts vs Oxford 3 (2.0-4.0)

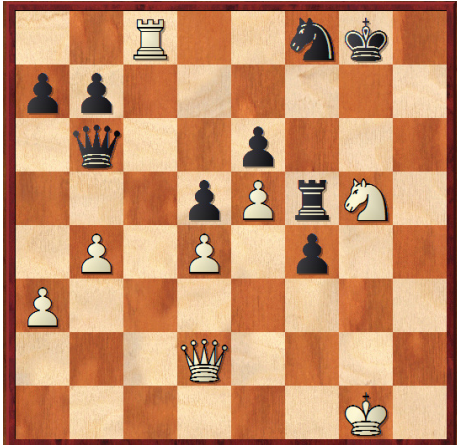
Sivakumar,Athman (1818) - Langham,Rod E (1786) [C02]

**1.e4 e6 2.d4 d5 3.e5 c5 4.c3 Bd7 5.Nf3 Nc6 6.Be2 Qb6 7.0-0 Nge7 8.Na3 cxd4 9.cxd4 Nf5 10.Nc2 Rc8 11.h3**



[11.g4 Nfe7 12.Nfe1 h5 13.gxh5 Nf5 14.Be3 Kd8 15.Nd3 Kc7 16.b4 Kb8 17.Kh1 f6 18.Nc5 Bxc5 19.bxc5 Qa5 20.exf6 gxf6 21.Rb1 Ka8 22.Rb3 e5 23.dxe5 d4 24.Bxd4 Nfxd4 25.Nxd4 Nxd4 26.Qxd4 Bc6+ 27.Bf3 Qxa2 28.Qe3 Rxh5 29.Bxc6 bxc6 30.Rfb1 Rch8 31.Qf3 Rxh2+ 32.Kg1 Qa4 33.Rb4 Qa6 34.exf6 R2h6 35.f7 Rg6+ 36.Rg4 Rxc4+ 37.Qxc4 Qa2 38.Qe4 Qd5 39.Qxd5 cxd5 40.Re1 Kb7 41.Re8 1-0 Motylev,A(2455)-Yurenko,K (2275)/Kolontaev 1997/EXT 2000] **11...Na5 12.Bd3 Bb5 13.Re1 Bxd3 14.Qxd3 Bb4 15.Nxb4 Qxb4 16.Bd2**

**Qb6 17.Bxa5 Qxa5 18.Rac1 0-0 19.g4 Ne7 20.a3 Nc6 21.Ng5 g6 22.f4** [22.b4 Qd8 23.f4 Qb6 24.Nf3 f5 25.exf6 Rxf6 26.b5 Ne7 27.Rxc8+ Nxc8 28.Qe3 Qd6 29.Ng5 Qxf4 30.Qxf4 Rxf4 31.Rxe6±] **22...Qd8 23.h4 Qd7 24.h5 h6 25.Nf3 Kg7 26.hxg6** [26.b4 Ne7 27.Nh4 Kh7 28.g5?] **26...fxg6 27.Nh4 Ne7 28.Rxc8 Qxc8 29.Rf1 Qc4 30.Qe3 g5? 31.Rc1** [31.f5!? White misses his chance, which could potentially turn things in his favour. Play could continue... 31...gxh4 32.f6+ Kh7 33.Rc1! The intermezzo! 33...Qb5 34.fxe7 Rf7 35.b4 Rxe7 36.Kh2 Rf7 37.Kh3 Qe8 38.Kxh4 Qg8 39.Rc3?] **31...gxf4 32.Qd2 Qb3 33.Rc3 Qb6 34.Nf3 Rf7 35.b4 Ng6 36.g5 hxg5 37.Nxg5 Rf5 38.Rc7+ Kg8** [38...Kf8µ continues to show his winning advantage. 39.Rc8+ Ke7 40.Nf3 Kd7 41.Rc5 Rf8 42.Qg2 Ne7 43.Qh2 Qa6 44.Ra5 Qd3 45.Qf2 Nf5 46.Rxa7 Rg8+ 47.Kh2 Ne3µ] **39.Rc8+ Nf8**



The game ended here, but if...

**40.Nf3 Kf7 41.Kf2 Ng6 42.Qc2 Ne7 43.Rc7 Ke8  
44.Qc5** not clear black should be winning this!  
**44...Qxc5 45.bxc5 b6 46.Rxa7 bxc5 47.Ra8+ Kd7  
48.Ra7+ Ke8** and it could have ended in a draw! **0-1**

RD 4		BEAUTY AND THE BEASTS	1902	v	OXFORD 3	1878
1	w	McCullough, Simon L	1986	0 - 1	Vikanis, Georgs	1978
2	b	Carpenter, David J	1983	½ - ½	Wedge, David C *	1954
3	w	Davies, Matthew	1956	1 - 0	Zhang, Marco	1938
4	b	Foster, William E *	1800	½ - ½	Terry, Sean	1867
5	w	Sivakumar, Athman	1818	0 - 1	Langham, Rod E	1786
6	b	Corcoran, Gary	1866	0 - 1	Henbest, Kevin B	1746
				2 - 4		

### Guildford-A&DC 4 vs AMCA Hippos (0.0-6.0)

Deswarte,Ian - Holland,James P (1943) [B76]

**1.e4 c5 2.Nf3 d6 3.d4 cxd4 4.Nxd4 Nf6 5.Nc3 g6 6.Be3 Bg7 7.f3 Nc6 8.Qd2 0-0 9.0-0-0 d5 10.Kb1 Nxd4 11.Bxd4 dxe4 12.fxe4 Be6 13.Be2 Rc8**



[13...Qa5 Not too many games have gone through this line... 14.Nd5 Qxd2 15.Nxe7+ Kh8 16.Rxd2 Nxe4 17.Bxg7+ Kxg7 18.Rd4 Nf6 19.Bf3 Rfe8 20.Nd5 Nxd5 21.Bxd5 Rad8 22.c4 b5 23.Rhd1 Bf5+ 24.Kc1 bxc4 25.Bxf7 Rxd4 26.Bxe8 Re4 27.Bd7 Kf6 28.Bxf5 Kxf5 29.Rd7 Rh4 30.h3 Kf4 31.Rxa7 Kg3 32.Ra3+ Kxg2 33.Rc3 Rxh3 34.a4 Rh4 35.a5 Re4 36.a6 h5 37.a7 Re8 38.Rxc4 Ra8 39.Rc7 h4 40.b4 h3 41.b5 h2 42.Rc2+ ½-½ Santos,,J (2301)-Oliveira,L (2166)/Olival Basto 2000/EXT 2001] **14.h4 [14.Bf3] 14...h5 15.Qg5 Qc7 16.Bf3 a6 17.Rd2 Kh7 18.Be3 b5 19.Nd5 Qa5 20.Rhd1 Ng8 21.Qg3?**

[21.Rd3 Guarding the c3 square which was necessary due to black's next few moves... 21...Bxd5 (21...Bh6 22.Qe5 Bxe3 23.Rxe3 Bxd5 24.exd5 Qc7 25.Qe4 f5 26.Qd3 Qc4 27.Qd2 Qxh4 28.Re6±) 22.Qxd5 Qb4 23.Qb3 Qxb3 24.axb3 Nf6 25.Bg5 Rfe8 26.c3±]

**21...Bxd5 22.Rxd5 Bxb2! 23.Kxb2 Qc3+ 24.Kb1 Qxc2+ 25.Ka1 Qc3+ 26.Kb1 Rc4 27.R5d4 Qxe3μ** And black converted his material advantage on move 34. **28.Rxc4 bxc4 29.Qc7 Qc3 30.Rd5 Qb4+ 31.Kc2 Rb8 32.Rd8 Qb1+ 33.Kc3 Qb2+ 34.Kxc4 Qc2+ 0-1**

RD 4		GUILDFORD-A&DC 4	0	v	AMCA HIPPOS	1955
1	w	Deswarte, Ian		0 - 1	Holland, James P (J)	1943
2	b	Armour, Philip		0 - 1	Mitchell, Stephen R	2017
3	w	Ward, Matthew J		0 - 1	Jeffries, Majid	2001
4	b	default		0 - 1	Andreev, Peter	1895
5	w	default		0 - 1	Owens, Trefor H	1946
6	b	default		0 - 1	Marley, Andrew	1930
				0 - 6		

## Cambridge University 2 vs Halesowen (5.5-0.5)

Campbell,Mark C (2013) - Asbury,Jon A (1786) [C02]

**1.e4 e6 2.d4 d5 3.e5 c5 4.c3 Nc6 5.Nf3 Qb6 6.a3 c4 7.Nbd2 Na5 8.Be2 g6** [8...Bd7 is by far the most popular choice of moves 9.0-0 h6 (9...Ne7 10.Rb1 h6 11.Re1 0-0-0 12.Qc2 Kb8 13.Bd1 Rc8 14.Nf1 Nb3 15.Bf4 Ka8 16.Ng3 Ba4 17.Qe2 Qb5 18.Nh5 Na5 19.Nd2 Rc7 20.g4 Nc8 21.Bxa4 Qxa4 22.Nf1 Nb6 23.Bg3 Qb3 24.Ne3 Na4 25.Nxd5 exd5 26.e6 Re7 27.Nf4 Nb6 28.Qf3 Qb5 29.exf7 Rxf7 30.Nxd5 Rxf3 31.Nc7+ Kb8 32.Nxb5+ Kc8 33.Nxa7+ Kd7 34.Re5 Nc6 35.Rb5 Nxa7 36.Rxb6 Kc8 37.Re1 Nc6 38.d5 1-0 Sveshnikov,E (2535)-Casper,T (2430)/Moscow 1987/TD) 10.Rb1 Ne7 11.g3 Nec6 12.Nh4 Be7 13.Ng2 0-0-0 14.Kh1 Be8 15.f4 f5 16.exf6 Bxf6 17.Bh5 Ne7 18.Bxe8 Rdx8 19.g4 g6 20.Nf3 1/2-1/2 Sveshnikov,E (2545)-Farago,I (2510)/Novi Sad 1979] **9.0-0 Bg7 10.Rb1 Bd7 11.Re1 Ne7 12.h4 h5 13.Ng5 Nf5 14.g3 f6 15.exf6 Bxf6 16.Ndf3 Kf8 17.Bf4 Kg7 18.Be5±**



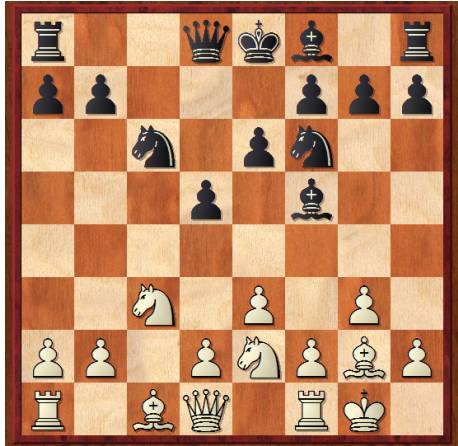
White has a huge positional edge and intends to increase it. **18...Rae8 19.Bxf6+ Kxf6 20.Ne5 Bc8 21.Ngf7 Rh7 22.Qd2 Ne7 23.Qg5+** [23.Nd6! is much stronger... 23...Qxd6 24.Qf4+ Kg7 25.Qf7+ Kh8 26.Qxe8+ Ng8 27.Nxg6+ Kg7 28.Qxc8±] **23...Kg7 24.g4 hxg4 25.Bxg4 Nac6 26.Nd6 Rd8 27.Nxc8 Rxc8 28.Nxc6 Nxc6 29.Rxe6 Rh6 30.Qf6+ Kg8 31.Rbe1 1-0**

RD 4		CAMBRIDGE UNIVERSITY 2	1975	v	HALESOWEN	1862
1	w	Chan, Nevil	2098	1 - 0	Pugh, Glyn D	1978
2	b	Lee, Richard WY	2058	½ - ½	Hope, Gary	1938
3	w	Gooding, Ian	1986	1 - 0	Lee, Darren	1890
4	b	Robertson, J Stuart	1986	1 - 0	Doran, Michael J	1884
5	w	Campbell, Mark C	2013	1 - 0	Asbury, Jon A	1786
6	b	Kourtseva, Julie (F)	1706	1 - 0	Pitt, Chris W	1698
				5½-½		

### Bristol 3 vs AMCA Cheetahs (4.5-1.5)

Woodruff, David G (1666) - Dixit, Kumar (1450) [A11]

1.c4 e6 2.Nc3 d5 3.cxd5 cxd5 4.e3 Bf5 5.Nge2 Nc6 6.g3 [6.Ng3 Bg6 7.h4 h5 8.Qb3 Rb8 9.Nxd5] 6...Nf6 7.Bg2 e6 8.0-0



[8.d4 Nb4 9.Qa4+ Qd7 10.Qxd7+ Kxd7 11.0-0 Bd6 12.a3 Nc2 13.Rb1 Rbc8 14.Bd2 Bd3 15.Rfd1 Rc6<sup>3</sup>] 8...Nb4 9.a3?? [9.Qa4+ was definitely needed... 9...Qd7 10.Qxd7+ Kxd7 11.d4 Nd3 12.f3 Be7 13.e4 Bg6 14.Nf4 Nxf4 15.Bxf4 Rbc8 16.Rac1 Rc6<sup>2</sup>; 9.d4 Bd6 10.a3 Nc6 (10...Nc2 11.Rb1 Rc8 12.Bd2 0-0 13.Rc1+-) 11.f3 Bg6 12.e4 Be7 13.e5 Nd7 14.Be3 0-0=]

9...Bc2!μ 10.axb4 Bxd1 11.Rxd1 Bxb4 12.Nd4 0-0 and black converted on move 31.

13.Ra4 Bxc3 14.bxc3 Qd7 15.Rb4 Rfc8 16.Ba3 e5 17.Nf3 e4 18.Ng5 Qg4 19.Rdb1 Qxg5 20.Rxb7 h5 21.Bd6 h4 22.Bf4 Qh5 23.h3 hxg3 24.fxg3 Qe2 25.R7b2 Rc6 26.Bf1 Qh5 27.Ra2 g5 28.Be5 g4 29.Bxf6 Rxf6 30.h4 Rf3 31.Kg2 Qe5 0-1

RD 4		BRISTOL 3	1692	v	AMCA CHEETAHS	1540
1	w	Thompson, Robert	1835	1 - 0	Malhotra, Tarun	1730
2	b	Dunlop, Neil J	1802	½ - ½	Upham, John E	1658
3	w	Stepan, Paul	1842	1 - 0	O'Neill, Tom C	1523
4	b	Woolgar, Steven G	1698	1 - 0	Mitchell, Florence (F)	1418
5	w	Woodruff, David G	1666	0 - 1	Dixit, Kumar	1450
6	b	Taylor, John-Paul	1306	1 - 0	Coates, Christine (F)	1458
				4½-1½		

## Division 3 tables

Team	Won	Drawn	Lost	Points
<b>WARWICKSHIRE SELECT 2</b>	<b>3</b>	<b>1</b>	<b>0</b>	<b>7</b>
<b>KJCA KINGS</b>	<b>3</b>	<b>1</b>	<b>0</b>	<b>7</b>
<b>RHYFELWYR ESSYLLWG</b>	<b>3</b>	<b>0</b>	<b>1</b>	<b>6</b>
<b>3CS</b>	<b>3</b>	<b>0</b>	<b>1</b>	<b>6</b>
ICENI	2	2	0	6
NOTTINGHAMSHIRE 1	2	2	0	6
NOTTINGHAMSHIRE 2	2	2	0	6
WESSEX 2	3	0	1	6
BRILLE CHESS ASSOCIATION	2	2	0	6
BRISTOL 2	2	1	1	5
FCA SOLUTIONS 2	2	1	1	5
SAMBUCA BLACK SHEEP	2	1	1	5
SUSSEX SMART CONTROLS	2	1	1	5
THE FULL PONTY	2	1	1	5
E2E4.ORG.UK 2	2	1	1	5
HACKNEY	2	0	2	4
AMCA RHINOS	2	0	2	4
CAMBRIDGE UNIVERSITY 2	2	0	2	4
AMCA HIPPOS	1	1	2	3
OXFORD 2	1	1	2	3
GLOUCESTERSHIRE GAMBITS	1	1	2	3
CELTIC TIGERS 2	1	1	2	3
BRISTOL 3	1	1	2	3
BEAUTY AND THE BEASTS	1	0	3	2
GUERNSEY MATES	1	0	3	2
OXFORD 3	1	0	3	2
SCS	1	0	3	2
AMCA CHEETAHS	1	0	3	2
KJCA KNIGHTS	0	1	3	1
GUILDFORD-A&DC 4	0	0	4	0
HALESOWEN	0	0	4	0
E2E4.ORG.UK 3	0	0	4	0

You can find all of the games from this round here:

PGN [http://www.4ncl.co.uk/0910\\_div3-04.pgn](http://www.4ncl.co.uk/0910_div3-04.pgn)

Game viewer [http://www.4ncl.co.uk/0910\\_div3-04viewer.htm](http://www.4ncl.co.uk/0910_div3-04viewer.htm)

And view results and information about the 4ncl here: <http://www.4ncl.co.uk/>